



PS-100 Series

STANDARD CONSTRUCTION

- Material: Extruded Aluminum 6063-T6 and/or 6061-T6
- Fascia: Round Tube, .125" (3.2mm) nominal wall thickness
- Perforated Panel: Minimum .125" (3.2mm) nominal wall thickness perforated sheet, various hole patterns.
- Outriggers: Flat Bar, .25" (6.4mm) or .375" (9.5mm) nominal wall thickness
- Mounting Brackets: Extruded Aluminum Tee
- Finish: Mill

OPTIONAL ACCESSORIES

- Aluminum suspension rods
- Segmented or radius formed components
- All sizes are custom fabricated to meet project requirements
- Tube or Channel Outriggers

FINISHES

- 2 coat fluoropolymer: Fluoropon Pure® 70% PVDF (AAMA 2605)*
- 3 coat fluoropolymer: Fluoropon Pure® 70% PVDF (AAMA 2605)*
- Anodic finishes: Class I & Class II, Clear and Bronze Spectrum
- Prime coat

*Fluoropon Pure® is Living Building Challenge Red List Declared

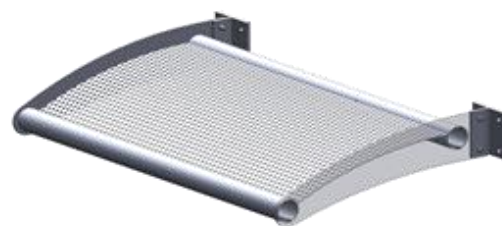
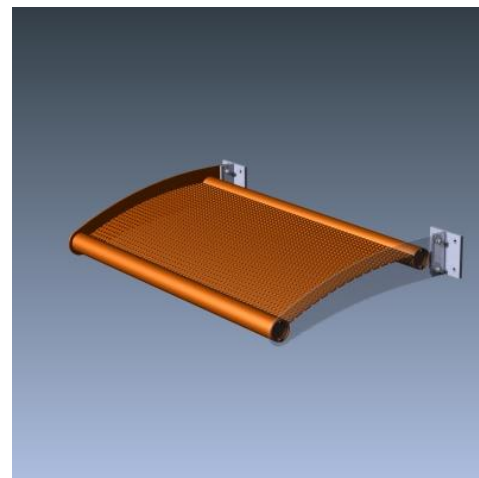
*Custom colors available

SUGGESTED SPECIFICATIONS

General: Furnish and install where indicated on drawings PS-100 Sunshade as manufactured by Industrial Louvers, Inc., Delano, MN.

Material: Perforated panel to be fabricated from .125" perforated sheet (various hole patterns). Fascia shall be fabricated from .125" extruded aluminum tubes. Outriggers shall be fabricated from extruded aluminum flat bar, minimum wall thickness of .25". Suspension rods (as required) shall be 3/4" diameter aluminum rod. Mounting brackets to ship shipped loose.

Sunshades shall be installed in accordance with manufacturer's recommended attachment method and in accordance with state and federal building codes.



Typical Assembly



Horizontal Section

Qty.	Size:		M.O. <input type="checkbox"/>	Mullion Type	No. of Sections	Notes
	Width	Height				
<input type="checkbox"/>						
<input type="checkbox"/>						
<input type="checkbox"/>	Sill flashing:			Project:		
<input type="checkbox"/>	Screen:			Location:		
<input type="checkbox"/>	Finish:			Architect:		
	Color:			Representative:		
<input type="checkbox"/>	Other:			Date:	Job #:	

