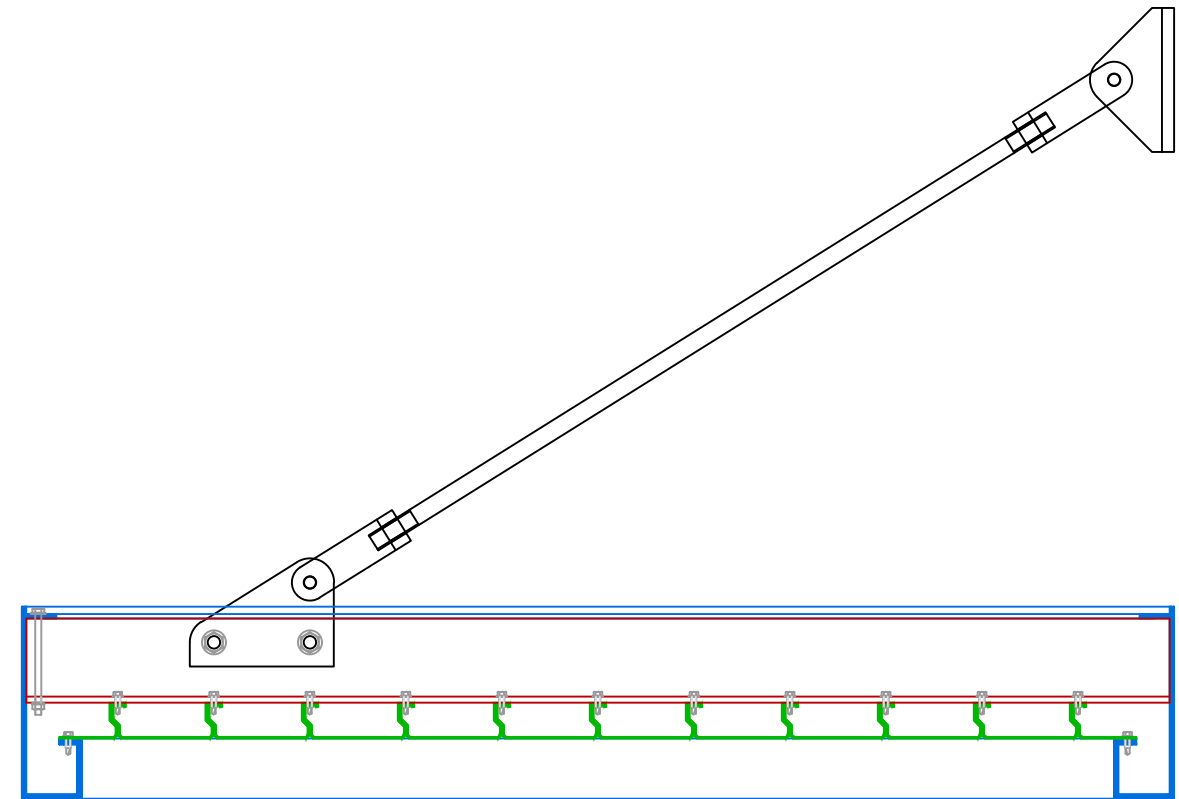


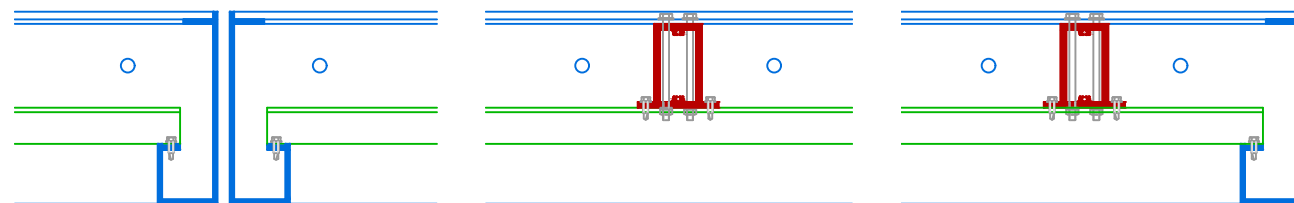
1 ELEVATION
1



2 CROSS SECTION
1

GENERAL NOTES:

- FASTENERS INTO THE SURROUNDING CONDITIONS WILL NOT BE SUPPLIED BY ILI AND WILL BE BY OTHERS UNLESS NOTED OTHERWISE (UNO).
- SEPARATION OF DISSIMILAR MATERIALS IS THE RESPONSIBILITY OF THE INSTALLER UNO.
- ALL CANOPY COMPONENTS WILL BE ALUMINUM UNO.
- ALL FASTENERS USED IN CANOPY ASSEMBLY WILL BE STAINLESS STEEL UNO.
- ALL BOLTS SUPPLIED BY ILI WILL INCLUDE REQUIRED FLAT WASHERS, LOCK WASHERS, AND NUTS.
- PLEASE CONTACT ILI FOR DESIGN CONSULTATION.**



3 CROSS SECTION
1

Model: Banyan Canopy
Date: 00/00/0000
Drawn By: -
Scale: 1:40
Sheet 1 OF 1
Please contact us: www.industriallouvers.com

