



# MODEL SP237V

## STANDARD CONSTRUCTION

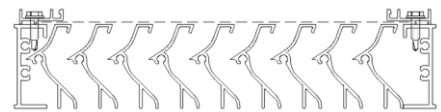
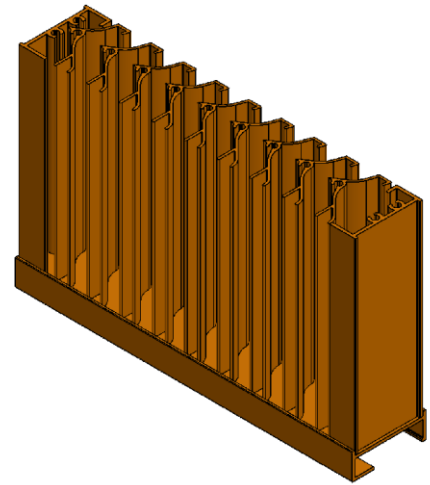
- **Material:** Extruded Aluminum 6063-T6
- **Frame:** 2" (51 mm) deep, .081" (2.1 mm) nominal wall thickness
- **Blades:** 2" (51 mm) deep, .063" (1.6 mm) nominal wall thickness
- **Blade Spacing:** 15/16" (23.8 mm) on center
- **Finish:** Mill

## OPTIONAL ACCESSORIES

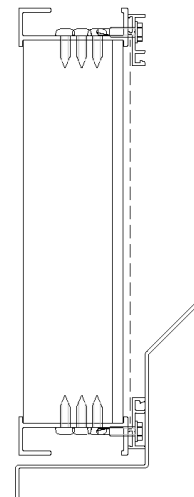
- Screen: 1/2" x .063" flattened expanded bird screen and/or 18 x 14 mesh charcoal insect screen.
- Extended Sill Flashing
- Insulated and Non-insulated Blank-off Panels
- Flanged & Glazing Frames of various sizes
- Hinged Access Panels
- Sub-frames
- Visible Mullions
- Invisible Mullions for continuous blade appearance

## FINISHES

- **2 coat Fluoropolymer:** Kynar® 500 / custom colors available in 70% PVDF (AAMA 2605). Living Building Challenge (LBC) Red List Free.
- **3 coat Fluoropolymer:** Kynar 500 / Hylar 5000 custom colors available in 70% PVDF (AAMA 2605). LBC Red List Free.
- **Anodic finishes:** Class I and Class II in Clear, Light/Medium/Dark Bronze, Champagne, and Black.
- **Prime coat**



Plan View



Vertical Section

Qty.	Size:		M.O. <input type="checkbox"/>	Mullion Type	No. of Sections	Notes
	Width	Height				
<input type="checkbox"/>	Sill flashing:					Project:
<input type="checkbox"/>	Screen:					Location:
<input type="checkbox"/>	Finish:					Architect:
	Color:					Representative:
<input type="checkbox"/>	Other:					Date: Job #:





# MODEL SP237V

## SUGGESTED SPECIFICATIONS

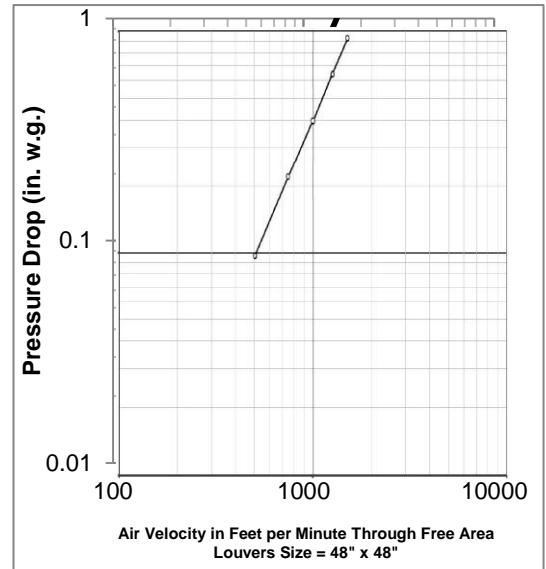
**General:** Furnish and install where indicated on drawings 2" (23.8 mm) Storm Performance Louver Model SP237V as manufactured by Industrial Louvers, Inc., Delano, MN.

**Material:** Extruded aluminum frames and blades shall be one piece 6063-T6 alloy, designed to collect and drain water to the exterior at the sill. Frame shall have a material thickness of .081" (2.1mm). Fixed blades shall have a material thickness of .063" (1.6mm). Frames and blades shall be joined by stainless steel mechanical fastener.

### Performance

- Free area (4' x 4' louver) = 7.69 sq. ft. (48.0%)
- Free area velocity at point of beginning water penetration (.01 oz/sq. ft.) = above 1,250 fpm
- Pressure drop @ 620 FPM velocity = .15" water
- Air volume @ 620 FPM free area velocity = 4770.0 CFM

## Air Performance Chart



The AMCA Certified Ratings Seal applies to Air Capacities in the intake model only. Data corrected to standard air density Tested to AMCA 500-L

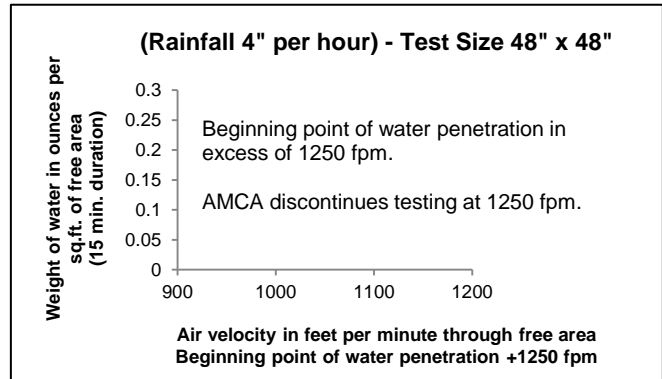
### Discharge Coefficient

Intake  $C_D=0.20$  (Class 3)  
AMCA certifies the coefficient class only

## Free Area

Square Feet (Square Meters)						
Free Area AMCA Licensed for openings up to 72" x 120"						
For free area data for larger openings, contact factory.						
3048.0	0.38	0.85	1.32	1.82	2.29	2.76
<b>120</b>	<b>4.07</b>	<b>9.14</b>	<b>14.20</b>	<b>19.60</b>	<b>24.64</b>	<b>28.73</b>
2743.2	0.34	0.76	1.19	1.64	2.06	2.48
<b>108</b>	<b>3.66</b>	<b>8.21</b>	<b>12.76</b>	<b>17.62</b>	<b>22.14</b>	<b>26.72</b>
2438.4	0.30	0.68	1.05	1.45	1.83	2.20
<b>96</b>	<b>3.25</b>	<b>7.29</b>	<b>11.32</b>	<b>15.63</b>	<b>19.65</b>	<b>23.71</b>
2133.6	0.26	0.59	0.92	1.27	1.59	1.92
<b>84</b>	<b>2.84</b>	<b>6.36</b>	<b>9.88</b>	<b>13.65</b>	<b>17.15</b>	<b>20.70</b>
1828.8	0.23	0.50	0.78	1.08	1.36	1.64
<b>72</b>	<b>2.42</b>	<b>5.44</b>	<b>8.45</b>	<b>11.66</b>	<b>14.66</b>	<b>17.69</b>
1524	0.19	0.42	0.65	0.90	1.13	1.36
<b>60</b>	<b>2.01</b>	<b>4.51</b>	<b>7.01</b>	<b>9.68</b>	<b>12.16</b>	<b>14.68</b>
1219.2	0.15	0.33	0.52	0.71	0.90	1.08
<b>48</b>	<b>1.60</b>	<b>3.59</b>	<b>5.57</b>	<b>7.69</b>	<b>9.67</b>	<b>11.67</b>
914.4	0.11	0.25	0.38	0.53	0.67	0.80
<b>36</b>	<b>1.19</b>	<b>2.66</b>	<b>4.13</b>	<b>5.71</b>	<b>7.17</b>	<b>8.66</b>
609.6	0.07	0.16	0.25	0.35	0.43	0.52
<b>24</b>	<b>0.77</b>	<b>1.73</b>	<b>2.70</b>	<b>3.72</b>	<b>4.68</b>	<b>5.65</b>
304.8	0.03	0.08	0.12	0.16	0.20	0.24
<b>12</b>	<b>.036</b>	<b>.081</b>	<b>1.26</b>	<b>1.74</b>	<b>2.18</b>	<b>2.63</b>
<b>H/W</b>	304.8	609.6	914.4	1219	1524	1829
	<b>12</b>	<b>24</b>	<b>36</b>	<b>48</b>	<b>60</b>	<b>72</b>

## Water Penetration Chart



## Wind Driven Rain Chart

Ventilation Air Velocity (m/s)	Rainfall rate of 3" per hour (76 mm) and a wind velocity of 29 mph (47 kph).			Rainfall rate of 8" per hour (76 mm) and a wind velocity of 50 mph (47 kph).		
	Core Velocity (fpm)	Rating Effectiveness	Class	Core Velocity (fpm)	Rating Effectiveness	Class
0.0		100.0%	A		100.0%	A
0.5		100.0%	A		100.0%	A
1.0		100.0%	A		100.0%	A
1.5		100.0%	A		100.0%	A
2.0		100.0%	A		100.0%	A
2.5		100.0%	A	489	100.0%	A
3.0	590	100.0%	A	589	99.8%	A
3.5	702	99.8%	A	686	98.4%	B
<b>Effectiveness Rating</b>	<b>A = 1 to 0.99</b>		<b>B = 0.989 to 0.95</b>	<b>C = 0.949 to 0.080</b>		<b>D = 0.80 to 0</b>



Industrial Louvers, Inc. certifies that Model SP237V shown hereon is licensed to bear the AMCA Seal. The ratings shown are based on tests and procedures performed in accordance with AMCA Publication 511 and comply with the requirements of the AMCA Certified Ratings Program. The AMCA Certified Ratings Seal applies to air performance ratings and wind driven rain.

Hylar® and Kynar® are registered trademark of Solvay Solexix, Inc. © 2017 Industrial Louvers. All rights reserved.



www.industriallouvers.com  
info@industriallouvers.com

511 South 7th Street, Delano MN 55328  
Tel: +1.763.972.2981 • Fax: +1.763.972.2911