



# SA Series Sunshade

## STANDARD CONSTRUCTION

- **Material:** Extruded Aluminum 6063-T6 and/or 6061-T6
- **Fascia:** Round Tube, .125" (3.2mm) nominal wall thickness
- **Blades:** Airfoil Blades (various sizes) , minimum .081" (2.1mm) nominal wall thickness
- **Outriggers:** Flat Bar, .25" (6.4mm) or .375" (9.5mm) nominal wall thickness
- **Mounting Brackets:** Extruded Aluminum Tee
- **Finish:** Mill

## OPTIONAL ACCESSORIES

- Aluminum suspension rods
- Segmented or radius formed components
- All sizes are custom fabricated to meet project requirements
- Tube or Channel Outriggers

## FINISHES

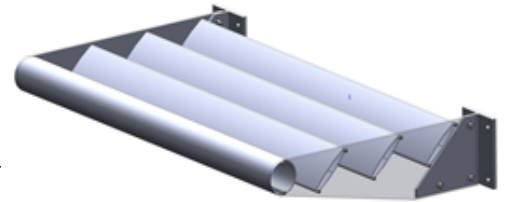
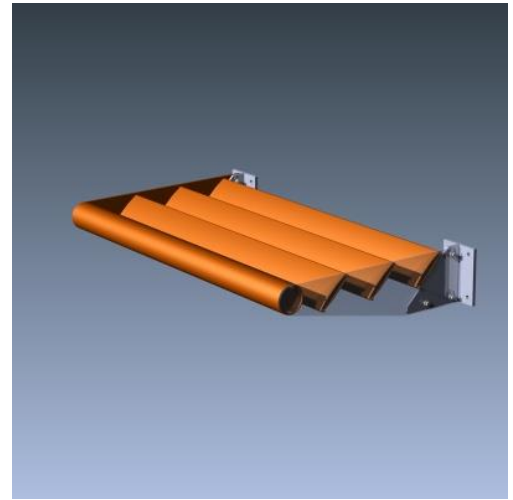
- **2 coat fluropolymer:** Kynar® 500 / custom colors available in 70% PVDF (AAMA 2605). Living Building Challenge (LBC) Red List Free.
- **3 coat fluropolymer:** Kynar 500 / Hylar 5000 custom colors available in 70% PVDF (AAMA 2605). LBC Red List Free.
- **Anodic finishes:** Class I & Class II in Clear, Light/Medium/Dark Bronze, Champagne & Black.
- **Prime coat**
- **Mill**

## SUGGESTED SPECIFICATIONS

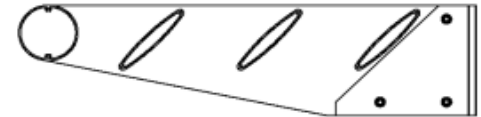
**General:** Furnish and install where indicated on drawings SA Series Sunshade as manufactured by Industrial Louvers, Inc., Delano, MN.

**Material:** Blades to be fabricated from 6063-T6 extruded aluminum airfoil blades, minimum wall thickness .081". Fascia shall be fabricated from .125" extruded aluminum tubes. Outriggers shall be fabricated from extruded aluminum flat bar, minimum wall thickness of .25". Suspension rods (as required) shall be 3/4" diameter aluminum rod. Mounting brackets shipped loose.

Sunshades shall be installed in accordance with manufacturer's recommended attachment method and in accordance with state and federal building codes.



Typical Assembly



Horizontal Section

Qty.	Size:		M.O. <input type="checkbox"/>	Mullion Type	No. of Sections	Notes
	Width	Actual <input type="checkbox"/> Height				
<input type="checkbox"/>	Sill flashing:		Project:			
<input type="checkbox"/>	Screen:		Location:			
<input type="checkbox"/>	Finish:		Architect:			
	Color:		Representative:			
<input type="checkbox"/>	Other:		Date:	Job #:		

CATALOG NO. SA Series Rev: Feb 2015

