



ECG Series Sunshade

STANDARD CONSTRUCTION

- **Material:** Extruded Aluminum 6063-T6 and/or 6061-T6
- **Fascia:** Rectangular/Round Tube, .125" (3.2mm) nominal wall thickness
- **ECG Panel:** Minimum .125" (3.2mm) nominal wall thickness aluminum flat bar, various patterns.
- **Outriggers:** Flat Bar, .25" (6.4mm) or .375" (9.5mm) nominal wall thickness
- **Mounting Brackets:** Extruded Aluminum Tee
- **Finish:** Mill

OPTIONAL ACCESSORIES

- Aluminum suspension rods
- Segmented or radius formed components
- All sizes are custom fabricated to meet project requirements
- Tube or Channel Outriggers

FINISHES

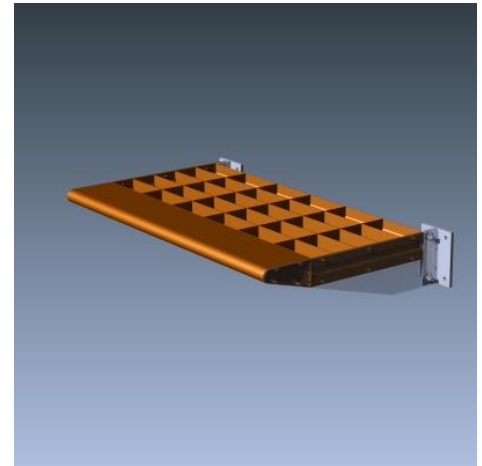
- **2 coat fluoropolymer:** Kynar[®] 500 / custom colors available in 70% PVDF (AAMA 2605). Living Building Challenge (LBC) Red List Free.
- **3 coat fluoropolymer:** Kynar 500 / Hylar 5000 custom colors available in 70% PVDF (AAMA 2605). LBC Red List Free.
- **Anodic finishes:** Class I & Class II in Clear, Light/Medium/Dark Bronze, Champagne & Black.
- **Prime coat**
- **Mill**

SUGGESTED SPECIFICATIONS

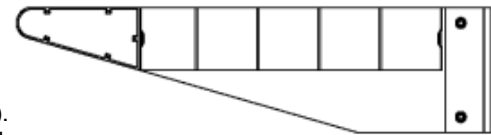
General: Furnish and install where indicated on drawings ECG Series Sunshade as manufactured by Industrial Louvers, Inc., Delano, MN.

Material: Egg crate grille panel to be fabricated from .125" aluminum flat bar (various patterns). Fascia shall be fabricated from .125" extruded aluminum tubes. Outriggers shall be fabricated from extruded aluminum flat bar, minimum wall thickness of .25". Suspension rods (as required) shall be 3/4" diameter aluminum rod. Mounting brackets to ship shipped loose.

Sunshades shall be installed in accordance with manufacturer's recommended attachment method and in accordance with state and federal building codes.



Typical Assembly



Horizontal Section

| Qty. | Size: | | M.O. <input type="checkbox"/> | Mullion Type | No. of Sections | Notes |
|--------------------------|----------------|--|-------------------------------|-----------------|-----------------|-------|
| | Width | Actual <input type="checkbox"/> Height | | | | |
| <input type="checkbox"/> | Sill flashing: | | | Project: | | |
| <input type="checkbox"/> | Screen: | | | Location: | | |
| <input type="checkbox"/> | Finish: | | | Architect: | | |
| | Color: | | | Representative: | | |
| <input type="checkbox"/> | Other: | | | Date: | Job #: | |

