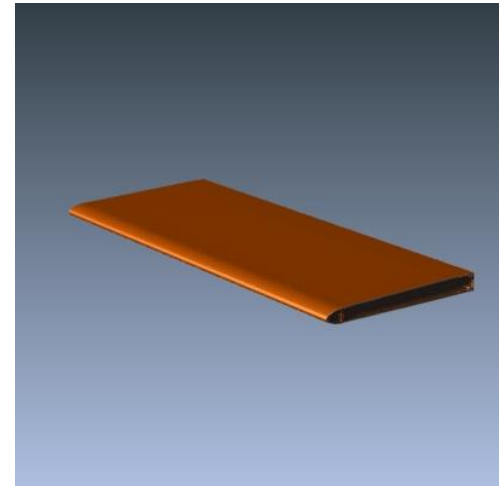




LS-200 Light Shelf



STANDARD CONSTRUCTION

- **Material:** Extruded Aluminum 6063-T6 and/or 6061-T6
- **Fascia:** Bullnose, .125" (3.2mm) nominal wall thickness
- **Rear Frame:** Channel, .125" (3.2mm) nominal wall thickness
- **Top & Bottom Panel:** Minimum .125" (3.2mm) nominal wall thickness aluminum sheet.
- **Outriggers:** Flat Bar, .25" (6.4mm) or .375" (9.5mm) nominal wall thickness
- **Mounting Brackets:** Extruded Aluminum Tee
- **Finish:** Mill

OPTIONAL ACCESSORIES

- Aluminum suspension rods
- Segmented or radius formed components
- All sizes are custom fabricated to meet project requirements
- Tube or Channel Outriggers

FINISHES

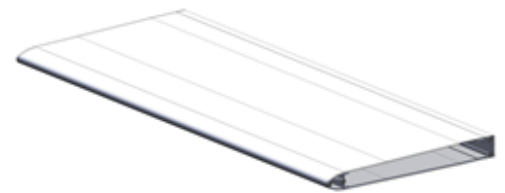
- **2 coat fluropolymer:** Kynar® 500 / custom colors available in 70% PVDF (AAMA 2605) or 50% PVDF (AAMA 2604). Living Building Challenge (LBC) Red List Free.
- **3 coat fluropolymer:** Kynar 500 / Hylar 5000 custom colors available in 70% PVDF (AAMA 2605). LBC Red List Free.
- **Anodic finishes:** Class I & Class II in Clear, Light/Medium/Dark Bronze, Champagne & Black.
- **Prime coat**
- **Mill**

SUGGESTED SPECIFICATIONS

General: Furnish and install where indicated on drawings LS-200 Light Shelf as manufactured by Industrial Louvers, Inc., Delano, MN.

Material: Top and bottom panel to be fabricated from .125" aluminum sheet.. Fascia shall be fabricated from .125" extruded aluminum bullnose. Rear frame shall be fabricated from .125" extruded aluminum channel. Outriggers shall be fabricated from extruded aluminum flat bar, minimum wall thickness of .25". Suspension rods (as required) shall be 3/4" diameter aluminum rod. Mounting brackets to ship loose.

Sunshades shall be installed in accordance with manufacturer's recommended attachment method and in accordance with state and federal building codes.



Typical Assembly



Horizontal Section

Qty.	Size:		Mullion Type	No. of Sections	Notes
	Width	Height			
<input type="checkbox"/>	Sill flashing:		Project:		
<input type="checkbox"/>	Screen:		Location:		
<input type="checkbox"/>	Finish:		Architect:		
	Color:		Representative:		
<input type="checkbox"/>	Other:		Date:	Job #:	

