

# MODEL 150

## STANDARD CONSTRUCTION

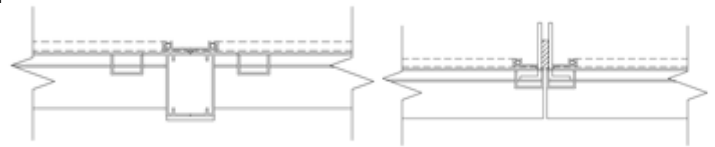
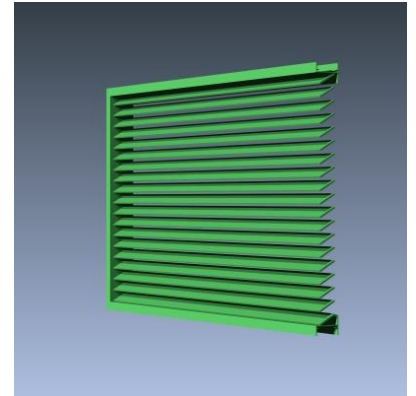
- **Material:** Extruded Aluminum 6063-T6
- **Frame:** 2" (51mm) deep, .063" (1.6mm) nominal wall thickness
- **Blades:** 2" (51mm) deep, .125" (3.2mm) nominal wall thickness
- **Blade Spacing:** 1" (25mm) on center
- **Finish:** Mill

## OPTIONAL ACCESSORIES

- Screen: 1/2" x .063" flattened expanded bird screen and/or 1 mesh charcoal insect screen
- Extended Sill Flashing
- Insulated and Non-insulated Blank-off Panels
- Flanged & Glazing Frames of various sizes
- Hinged Access Panels
- Sub-frames
- Visible Mullions
- Invisible Mullions for continuous blade appearance

## FINISHES

- **2 coat Fluoropolymer:** Kynar® 500 / custom colors available in 70% PVDF (AAMA 2605). Living Building Challenge (LBC) Red List Free.
- **3 coat Fluoropolymer:** Kynar 500 / Hylar 5000 custom colors available in 70% PVDF (AAMA 2605). LBC Red List Free.
- **Anodic finishes:** Class I and Class II in Clear, Light/Medium/Dark Bronze, Champagne, and Black.
- **Prime coat**



Visible Vertical Mullion

Invisible Vertical Mullion



Vertical Section



Plan View

Qty.	Size:		M.O. <input type="checkbox"/>	Mullion Type	No. of Sections	Notes
	Width	Height				
<input type="checkbox"/>	Sill flashing:			Project:		
<input type="checkbox"/>	Screen:			Location:		
<input type="checkbox"/>	Finish:			Architect:		
	Color:			Representative:		
<input type="checkbox"/>	Other:			Date:	Job #:	



# MODEL 150

## SUGGESTED SPECIFICATIONS

**General:** Furnish and install where indicated on drawings 2" (51mm) Thinline Louver Model 150 as manufactured by Industrial Louvers, Inc., Delano, MN.

**Material:** Extruded aluminum frames and blades shall be one piece 6063-T6 alloy. Frame shall have a material thickness of .063" (1.6mm). Fixed blades shall have a material thickness of .125" (3.2mm). Frames and blades shall be joined by welding, and frame will be caulked to prevent water penetration to interior wall construction.

### Performance

- Free area (4' x 4' louver) = 11.14 sq. ft. (69.6%)

## Free Area

Square Feet (Square Meters)						
Free Area AMCA Licensed for openings up to 72" x 120"						
For free area data for larger openings, contact factory.						
3048.0	0.44	1.02	1.60	2.18	2.76	3.34
<b>120</b>	<b>6.45</b>	<b>13.83</b>	<b>21.20</b>	<b>28.58</b>	<b>35.95</b>	<b>43.33</b>
2743.2	0.39	0.91	1.43	1.96	2.48	3.00
<b>108</b>	<b>5.80</b>	<b>12.42</b>	<b>19.05</b>	<b>25.67</b>	<b>32.30</b>	<b>38.92</b>
2438.4	0.35	0.81	1.27	1.73	2.19	2.66
<b>96</b>	<b>5.14</b>	<b>11.02</b>	<b>16.89</b>	<b>22.77</b>	<b>28.64</b>	<b>34.52</b>
2133.6	0.30	0.70	1.11	1.51	1.91	2.31
<b>84</b>	<b>4.06</b>	<b>9.18</b>	<b>14.31</b>	<b>19.43</b>	<b>24.56</b>	<b>29.68</b>
1828.8	0.26	0.60	0.94	1.28	1.63	1.97
<b>72</b>	<b>3.83</b>	<b>8.20</b>	<b>12.58</b>	<b>16.95</b>	<b>21.33</b>	<b>25.70</b>
1524	0.21	0.50	0.78	1.06	1.34	1.63
<b>60</b>	<b>3.17</b>	<b>6.80</b>	<b>10.42</b>	<b>14.05</b>	<b>17.67</b>	<b>21.30</b>
1219.2	0.17	0.39	0.61	0.84	1.06	1.28
<b>48</b>	<b>2.52</b>	<b>5.39</b>	<b>8.27</b>	<b>11.14</b>	<b>14.02</b>	<b>16.89</b>
914.4	0.12	0.29	0.45	0.61	0.78	0.94
<b>36</b>	<b>1.86</b>	<b>3.98</b>	<b>6.11</b>	<b>8.23</b>	<b>10.36</b>	<b>12.48</b>
609.6	0.08	0.18	0.29	0.39	0.49	0.60
<b>24</b>	<b>1.20</b>	<b>2.58</b>	<b>3.95</b>	<b>5.33</b>	<b>6.70</b>	<b>8.08</b>
304.8	0.03	0.08	0.12	0.17	0.21	0.26
<b>12</b>	<b>0.55</b>	<b>1.17</b>	<b>1.80</b>	<b>2.42</b>	<b>3.05</b>	<b>3.67</b>
<b>H/W</b>	304.8	609.6	914.4	1219	1524	1829
	<b>12</b>	<b>24</b>	<b>36</b>	<b>48</b>	<b>60</b>	<b>72</b>

