

MODEL SP537

STANDARD CONSTRUCTION

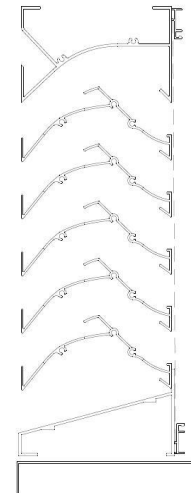
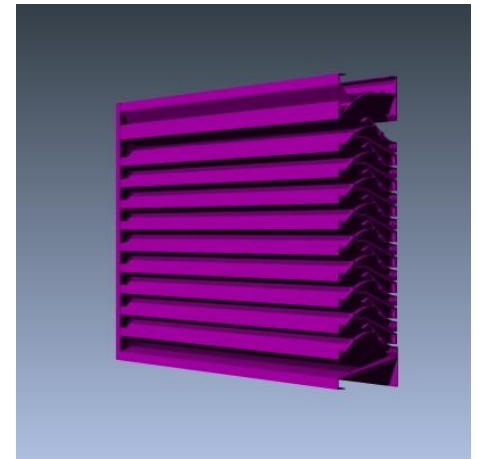
- **Material:** Extruded Aluminum 6063-T6
- **Frame:** 5" (127 mm) deep, .081" (1.6 mm) nominal wall thickness
- **Blades:** 5" (127 mm) deep, .063" (1.6 mm) nominal wall thickness
- **Blade Spacing:** 1.88" (47.63 mm) on center
- **Finish:** Mill

OPTIONAL ACCESSORIES

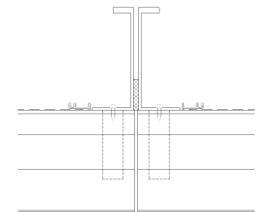
- Screen: 1/2" x .063" flattened expanded bird screen and/or 18 x 14 mesh charcoal insect screen.
- Extended Sill Flashing
- Insulated and Non-insulated Blank-off Panels
- Flanged & Glazing Frames of various sizes
- Hinged Access Panels
- Sub-frames
- Visible Mullions
- Invisible Mullions for continuous blade appearance

FINISHES

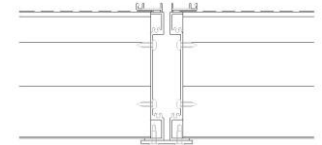
- **2 coat Fluoropolymer:** Kynar® 500 / custom colors available in 70% PVDF (AAMA 2605). Living Building Challenge (LBC) Red List Free.
- **3 coat Fluoropolymer:** Kynar 500 / Hylar 5000 custom colors available in 70% PVDF (AAMA 2605). LBC Red List Free.
- **Anodic finishes:** Class I and Class II in Clear, Light/Medium/Dark Bronze, Champagne, and Black.
- **Prime coat**



Vertical Section



Invisible Vertical Mullion



Visible Vertical Mullion



Plan View

Qty.	Size:		M.O. <input type="checkbox"/>	Mullion Type	No. of Sections	Notes
	Width	Height				
<input type="checkbox"/>	Sill flashing:			Project:		
<input type="checkbox"/>	Screen:			Location:		
<input type="checkbox"/>	Finish:			Architect:		
	Color:			Representative:		
<input type="checkbox"/>	Other:			Date:	Job #:	



MODEL SP537

SUGGESTED SPECIFICATIONS

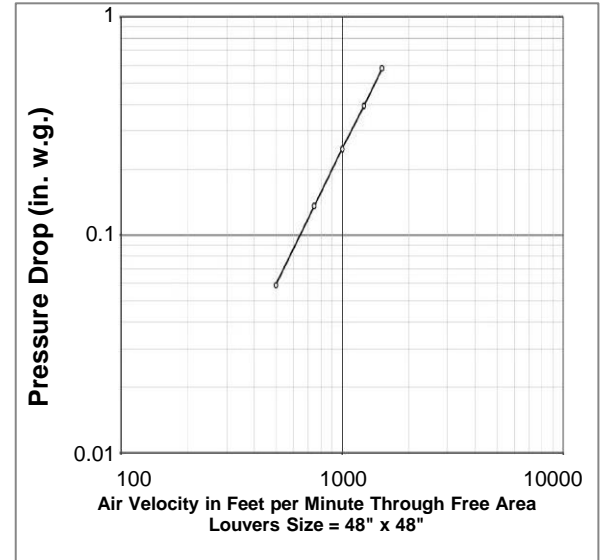
General: Furnish and install where indicated on drawings 5" (127mm) Storm Performance Louver Model SP537 as manufactured by Industrial Louvers, Inc., Delano, MN.

Material: Extruded aluminum frames and blades shall be one piece 6063-T6 alloy, designed to collect and drain water to the exterior at the sill by means of integral gutters in the blades and jamb frames. Frame shall have a material thickness of .081" (2.1mm). Fixed blades shall have a material thickness of .063" (1.6mm). Frames and blades shall be joined by stainless steel mechanical fastener, and frame will be caulked to prevent water penetration to interior wall construction.

Performance

- Free area (4' x 4' louver) = 7.65 sq. ft. (47.7%)
- Free area velocity at point of beginning water penetration (.01 oz/sq. ft.) > 1250 fpm
- Pressure drop @ 786 FPM velocity = .15" water
- Air Volume @ 786 FPM free area velocity = 6012 CFM

Air Performance Chart



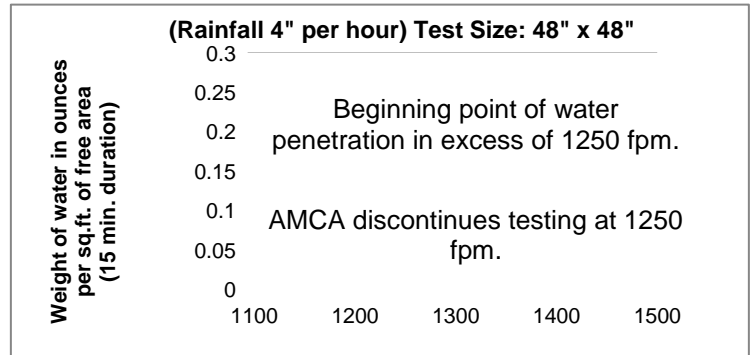
The AMCA Certified Ratings Seal applies to Air Capacities in the intake model only. Data corrected to standard air density.

Discharge Coefficient
Intake $C_d=0.28$ (Class 3)
AMCA certifies the coefficient class only

Free Area

Square Feet (Square Meters)						
Free Area AMCA Licensed for openings up to 72" x 120"						
For free area data for larger openings, contact factory.						
3048.0	0.43	0.92	1.41	1.90	2.40	2.89
120	4.62	9.91	15.19	20.47	25.76	31.04
2743.2	0.39	0.83	1.27	1.72	2.16	2.6
108	4.17	8.93	13.70	18.46	23.23	27.99
2438.4	0.34	0.73	1.12	1.51	1.89	2.28
96	3.66	7.84	12.01	16.19	20.37	24.55
2133.6	0.29	0.63	0.96	1.29	1.63	1.96
84	3.14	6.74	10.33	13.92	17.52	21.11
1828.8	0.25	0.54	0.82	1.11	1.39	1.68
72	2.69	5.77	8.84	11.91	14.99	18.06
1524	0.20	0.43	0.67	0.90	1.13	1.36
60	2.18	4.67	7.15	9.64	12.13	14.62
1219.2	0.16	0.34	0.53	0.71	0.89	1.08
48	1.72	3.69	5.66	7.63	9.60	11.57
914.4	0.11	0.24	0.37	0.50	0.63	0.76
36	1.21	2.60	3.98	5.36	6.75	8.13
609.6	0.07	0.15	0.23	0.31	0.39	0.47
24	0.75	1.61	2.47	3.33	4.19	5.05
304.8	0.02	0.05	0.08	0.11	0.14	0.17
12	0.27	0.57	0.87	1.18	1.48	1.79
H/W	304.8	609.6	914.4	1219	1524	1829
	12	24	36	48	60	72

Water Penetration Chart



Wind Driven Rain Chart

Ventilation Air Velocity (m/s)	Rainfall rate of 3" per hour (76 mm) and a wind velocity of 29 mph (47 kph).			Rainfall rate of 8" per hour (76 mm) and a wind velocity of 50 mph (47 kph).		
	Core Velocity (fpm)	Rating Effectiveness	Class	Core Velocity (fpm)	Rating Effectiveness	Class
0.0		100.0%	A		100.0%	A
0.5		100.0%	A		100.0%	A
1.0		100.0%	A		100.0%	A
1.5		100.0%	A	299	99.7%	A
2.0		100.0%	A	400	99.6%	A
2.5	499	99.9%	A	492	99.4%	A
3.0	590	99.6%	A	597	98.9%	B
3.5	702	99.5%	A	687	97.7%	B
Effectiveness Rating	A = 1 to 0.99		B = 0.989 to 0.95	C = 0.949 to 0.080		D = 0.80 to 0



Industrial Louvers, Inc. certifies that Model SP537 shown hereon is licensed to bear the AMCA Seal. The ratings shown are based on tests and procedures performed in accordance with AMCA Publication 511 and comply with the requirements of the AMCA Certified Ratings Program. The AMCA Certified Ratings Seal applies to air performance ratings, water penetration ratings, and wind driven rain. Hylar® and Kynar® are registered trademark of Solvay Solexix, Inc. © 2015 Industrial Louvers. All rights reserved.



www.industriallouvers.com
info@industriallouvers.com

511 South 7th Street, Delano MN 55328
Tel: +1.763.972.2981 • Fax: +1.763.972.2911