

MODEL 470

STANDARD CONSTRUCTION

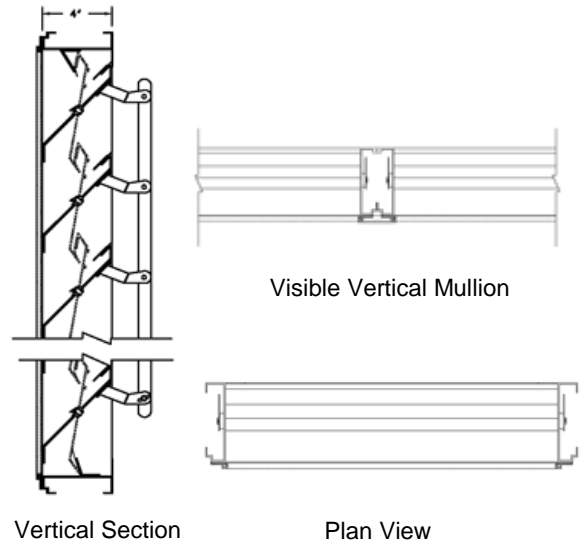
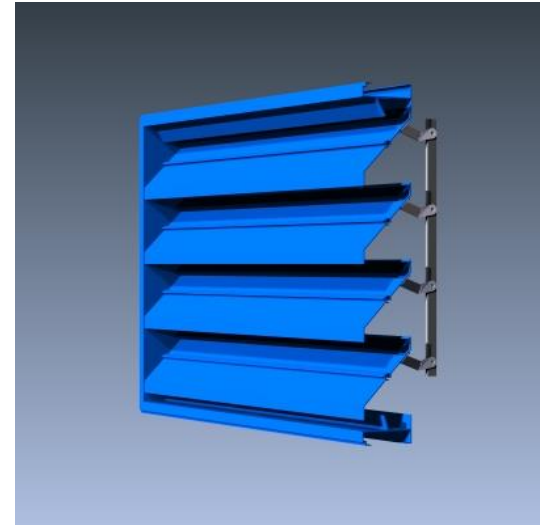
- **Material:** Extruded Aluminum 6063-T6
- **Frame:** 4" (102mm) deep, .081" (2.1mm) nominal wall thickness
- **Blades:** 4" (102mm) deep, .081" (2.1mm) nominal wall thickness
- **Blade Spacing:** 5.375" (137mm) on center
- **Finish:** Mill

OPTIONAL ACCESSORIES

- Screen: 1/2" x .063" flattened expanded bird screen and/or 18 x 14 mesh charcoal insect screen
- Extended Sill Flashing
- Insulated and Non-insulated Blank-off Panels
- Flanged & Glazing Frames of various sizes
- Hinged Access Panels
- Sub-frames
- Visible Mullions

FINISHES

- **2 coat Fluoropolymer:** Kynar® 500 / custom colors available in 70% PVDF (AAMA 2605). Living Building Challenge (LBC) Red List Free.
- **3 coat Fluoropolymer:** Kynar 500 / Hylar 5000 custom colors available in 70% PVDF (AAMA 2605). LBC Red List Free.
- **Anodic finishes:** Class I and Class II in Clear, Light/Medium/Dark Bronze, Champagne, and Black.
- **Prime coat**



Qty.	Size:		Mullion Type	No. of Sections	Notes
	Width	Height			
<input type="checkbox"/>	Sill flashing:		Project:		
<input type="checkbox"/>	Screen:		Location:		
<input type="checkbox"/>	Finish:		Architect:		
	Color:		Representative:		
<input type="checkbox"/>	Other:		Date:	Job #:	



MODEL 470

SUGGESTED SPECIFICATIONS

General: Furnish and install where indicated on drawings 4" (102mm) Sightproof Louver Model 470 as manufactured by Industrial Louvers, Inc., Delano, MN.

Material: Extruded aluminum frames and blades shall be one piece 6063-T6 alloy. Frame shall have a material thickness of .081" (2.1mm). Adjustable blades shall have a material thickness of .081" (2.1mm). Exposed linkage shall be interconnected with .75" x .125" aluminum flat bar. Blades operate on .375" pins with stainless steel ball bearings in cadmium plated races. Blade edge seals are included.

Performance

- Free area (4' x 4' louver) = 6.80 sq. ft. 42.5%

Free Area

Square Feet (Square Meters)						
Free Area AMCA Licensed for openings up to 72" x 120"						
For free area data for larger openings, contact factory.						
3048.0	0.44	1.02	1.60	2.18	2.76	3.34
120	4.06	8.94	13.82	18.69	23.57	28.45
2743.2	0.39	0.91	1.43	1.96	2.48	3.00
108	3.69	8.13	12.56	16.99	21.43	25.86
2438.4	0.35	0.81	1.27	1.73	2.19	2.66
96	3.14	6.91	10.68	14.45	18.21	21.98
2133.6	0.30	0.70	1.11	1.51	1.91	2.31
84	2.77	6.10	9.42	12.75	16.07	19.40
1828.8	0.26	0.60	0.94	1.28	1.63	1.97
72	2.40	5.28	8.16	11.05	13.93	16.81
1524	0.21	0.50	0.78	1.06	1.34	1.63
60	1.85	4.06	6.28	8.50	10.71	12.93
1219.2	0.17	0.39	0.61	0.84	1.06	1.28
48	1.48	3.25	5.02	6.80	8.57	10.34
914.4	0.12	0.29	0.45	0.61	0.78	0.94
36	0.92	2.03	3.14	4.25	5.36	6.47
609.6	0.08	0.18	0.29	0.39	0.49	0.60
24	0.55	1.22	1.88	2.55	3.21	3.88
304.8	0.03	0.08	0.12	0.17	0.21	0.26
12	0.18	0.41	0.63	0.85	1.07	1.29
H/W	304.8	609.6	914.4	1219	1524	1829
	12	24	36	48	60	72

