

MODEL ES200

STANDARD CONSTRUCTION

- **Material:** Extruded Aluminum 6063-T6
- **Blade Supports:** 3" (76 mm) X 0.125" (3.2 mm) Channel
- **Blade:** 2.25" (57 mm) Deep, 0.070" (1.8 mm) Wall Thickness
-Alternating "T" and "U" shaped blades
- **Blade Spacing:** 3" (76 mm) On Center From "T" to "U"

OPTIONAL ACCESSORIES

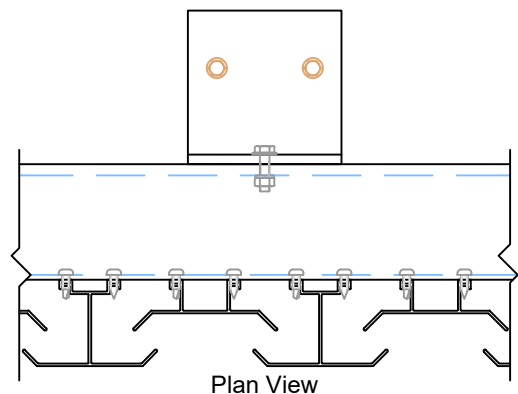
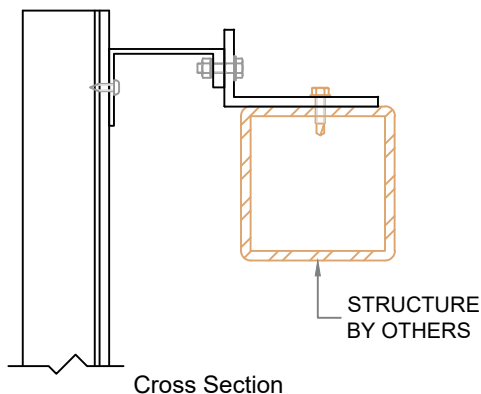
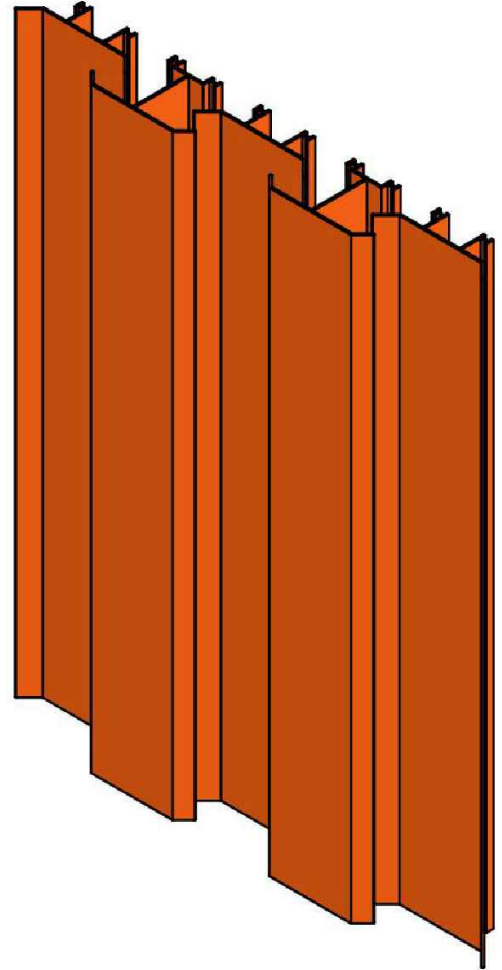
- Cap Flashing
- Invisible Mullions for Continuous Blade Appearance
- Hinged Access Panels

FINISHES

- **2-Coat Fluoropolymer:** Fluropon Pure® 70% PVDF (AAMA 2605)*
- **3-Coat Fluoropolymer:** Fluropon Pure® 70% PVDF (AAMA 2605)*
- **Anodic Finishes:** Class I & Class II, Clear & Bronze Spectrum
- **Prime Coat:** Recommended When Field Painting
*Custom Colors Available

SUGGESTED SPECIFICATIONS

- **General:** Furnish and install where indicated on drawings
2.25" (57 mm) Extruded Aluminum Vertical Blade
Equipment Screen Model ES200 as manufactured by
Industrial Louvers, Inc. Delano, MN.
- **Material:** Extruded aluminum blade supports shall be of
sufficient size and strength to resist all wind and dead
loads. Extruded aluminum blades shall be one piece
6063-T6 alloy. Fixed blades shall have a material
thickness of 0.070" (1.8 mm). Blade supports and blades
shall be joined by stainless steel fasteners.
- **Performance:** Equipment screen shall provide 100% visual
screening. Free area shall be approximately 24.1%.



REV: JUNE 2024