

MODEL 450XPI

STANDARD CONSTRUCTION

- Material: Extruded Aluminum 6063-T6
- Vertical Supports: 5" x 2" x .125" Aluminum Support Channels
- Blades: 4" (102mm) deep, .081" (2.1mm) nominal wall thickness
- Blade Spacing: 5" (127mm) on center
- Blade Angle: 40°
- Finish: Mill

OPTIONAL ACCESSORIES

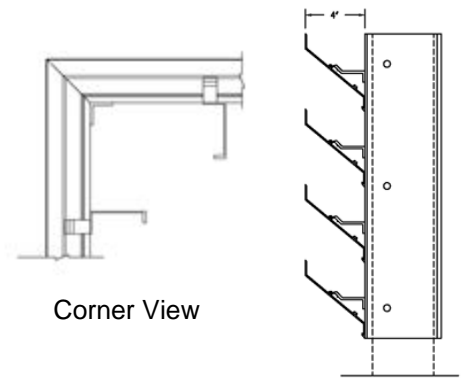
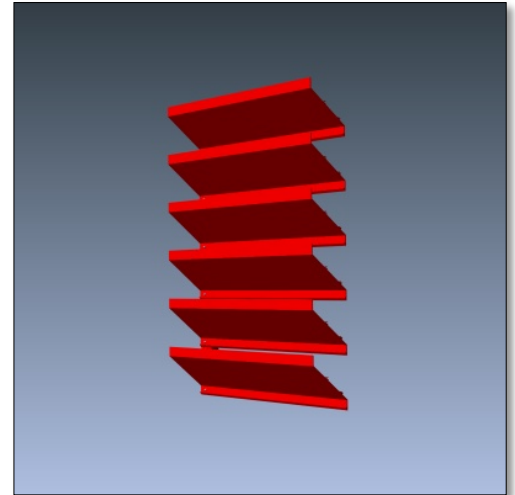
- Cap Flashing
- Hinged Access Panels
- Visible Mullions
- Invisible Mullions for continuous blade appearance

FINISHES

- 2 coat fluoropolymer: Kynar® 500 / custom colors available in 70% PVDF (AAMA 2605). Living Building Challenge (LBC) Red List Free.
- 3 coat fluoropolymer: Kynar 500 / Hylar 5000 custom colors available in 70% PVDF (AAMA 2605). LBC Red List Free.
- Anodic finishes: Class I and Class II in Clear, Light/Medium/Dark Bronze, Champagne, and Black.
- Prime coat

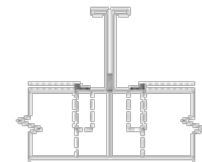
SUGGESTED SPECIFICATIONS

- General: Furnish and install where indicated on drawings 4" (102mm) Extruded Aluminum Inverted Equipment Screen Model 450XPI as manufactured by Industrial Louvers, Inc., Delano, MN.
- Material: Extruded aluminum supports and blades shall be one piece 6063-T6 alloy. Vertical supports shall have a material thickness of .125" (3.2mm). Fixed inverted blades shall have a material thickness of .081" (2.1mm). Supports and blades shall be joined by stainless steel mechanical fastener.
- Performance: Horizontal Load Coefficient (HLC) shall be no greater than 0.71. Vertical Load Coefficient (VLC) shall be no greater than 0.48. Equipment screen shall provide 100% visual screening from a horizontal vantage point. Free area shall be approximately 57.9%.



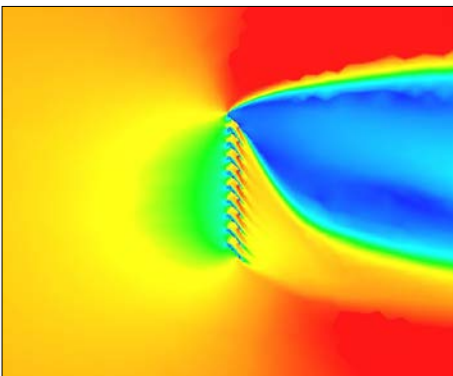
Corner View

Vertical Section



Invisible Vertical Mullion

VELOCITY PROFILE



CFD DATA

Wind Speed	Wall Force	Horizontal Force	Vertical Force	HLC	VLC
90	170.7	117.3	80.6	0.69	0.47
130	353.8	248.5	168.7	0.70	0.48
170	602.3	428.5	286.9	0.71	0.48
200	865.6	604.2	365.2	0.70	0.42
				0.71	0.48