

# MODEL 258

## STANDARD CONSTRUCTION

- **Material:** Extruded Aluminum 6063-T6
- **Frame:** 2" (51 mm) Deep, 0.063" (1.6 mm) Wall Thickness
- **Blade:** 2" (51 mm) Deep, 0.063" (1.6 mm) Wall Thickness
- **Blade Spacing:** 2" (51 mm) On Center

## OPTIONAL ACCESSORIES

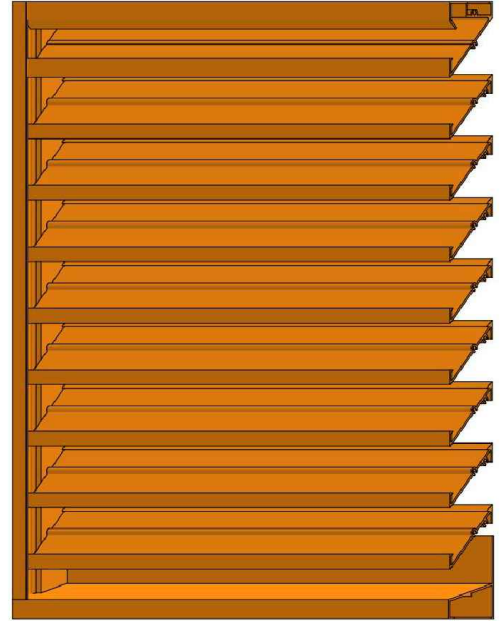
- Bird Screen - 1/2" x 0.063" Flattened Expanded Aluminum
- Insect Screen - 18 x 14 Mesh Charcoal Aluminum
- Sill Flashing
- Insulated & Non-Insulated Blank Off Panels
- Flanged & Glazing Frames
- Visible Mullions
- Invisible Mullions for Continuous Blade Appearance
- Hinged Access Panels

## FINISHES

- **2-Coat Fluoropolymer:** Fluoron Pure® 70% PVDF (AAMA 2605)\*
  - **3-Coat Fluoropolymer:** Fluoron Pure® 70% PVDF (AAMA 2605)\*
  - **Anodic Finishes:** Class I & Class II, Clear & Bronze Spectrum
  - **Prime Coat:** Recommended When Field Painting
- \*Custom Colors Available

## SUGGESTED SPECIFICATIONS

- **General:** Furnish and install where indicated on drawings  
2" (51 mm) louver Model 258 as manufactured by Industrial Louvers, Inc. Delano, MN.
- **Material:** Extruded aluminum frames and blades shall be one piece 6063-T6 alloy. Frame shall have a material thickness of 0.063" (1.6 mm). Fixed blades shall have a material thickness of 0.063" (1.6 mm). Frames and blades shall be joined by stainless steel fasteners, and frame will be caulked to prevent water penetration to interior wall construction.



REV: MARCH 2024



# MODEL 258

## PERFORMANCE

- Free Area = 9.01 ft<sup>2</sup> (56.3%)
- Beginning Point of Water Penetration = 633 fpm / 5703 cfm
- Air Flow @ ΔP of 0.15" Water = 972 fpm / 8757 cfm

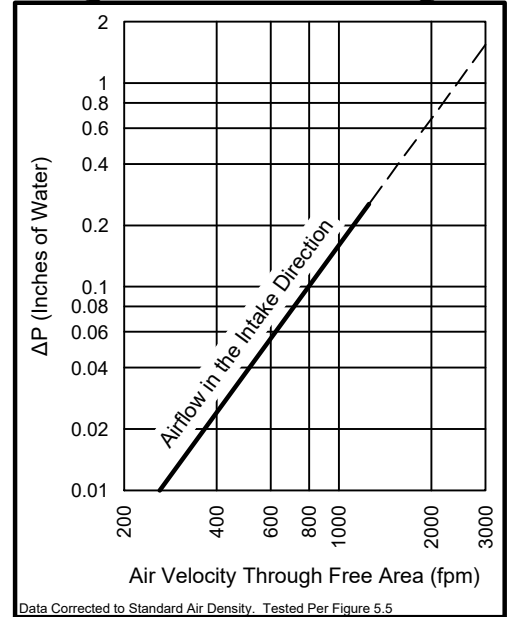
\*All Ratings Based on 48" x 48" Test Specimen

FREE AREA (ft<sup>2</sup>)

Louver Height	120 in	5.47	11.51	17.55	23.59	29.63	35.67
	108 in	4.91	10.33	15.74	21.16	26.58	32.00
	96 in	4.35	9.14	13.94	18.73	23.53	28.32
	84 in	3.78	7.96	12.13	16.30	20.47	24.65
	72 in	3.22	6.77	10.32	13.87	17.42	20.97
	60 in	2.65	5.58	8.51	11.44	14.37	17.30
	48 in	2.09	4.40	6.71	9.01	11.32	13.63
	36 in	1.53	3.21	4.90	6.58	8.27	9.95
	24 in	0.96	2.03	3.09	4.15	5.22	6.28
	12 in	0.40	0.84	1.28	1.72	2.16	2.61
Louver Width	12 in	24 in	36 in	48 in	60 in	72 in	

- Effects of blade stiffeners or additional bracing has not been considered.
- Effects of screen or other accessories has not been considered.
- Contact Industrial Louvers for free area of other sizes.
- 1 in = 25.4 mm
- 10.76 ft<sup>2</sup> = 1 m<sup>2</sup>

AIR PERFORMANCE



Industrial Louvers, Inc. certifies that the Model 258 shown herein is licensed to bear the AMCA Seal. The ratings shown are based on tests and procedures performed in accordance with AMCA Publication 511 and comply with the requirements of the AMCA Certified Ratings Program. The AMCA Certified Ratings Seal applies to air performance ratings and water penetration ratings.

© 2024 Industrial Louvers. All rights reserved.

REV: MARCH 2024



www.IndustrialLouvers.com  
ilinfo@IndustrialLouvers.com

511 South 7th Street, Delano MN 55328  
Tel: 763.972.2981 | Fax: 763.972.2911