

# MODEL 670

## STANDARD CONSTRUCTION

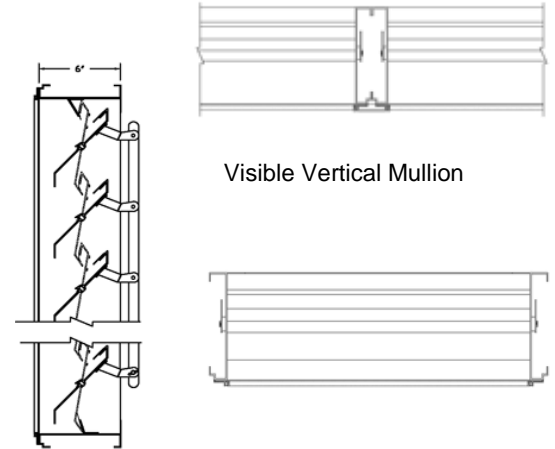
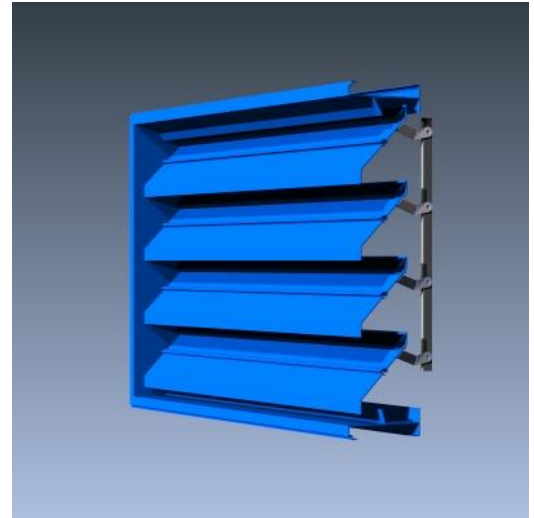
- **Material:** Extruded Aluminum 6063-T6
- **Frame:** 6" (152mm) deep, .081" (2.1mm) nominal wall thickness
- **Blades:** 4" (102mm) deep, .081" (2.1mm) nominal wall thickness
- **Blade Spacing:** 5.375" (137mm) on center
- **Screen:** 1/2" x .063" flattened expanded bird screen and/or 18 x 14 mesh charcoal insect screen.
- **Finish:** Mill

## OPTIONAL ACCESSORIES

- Extended Sill Flashing
- Insulated and Non-insulated Blank-off Panels
- Flanged & Glazing Frames of various sizes
- Hinged Access Panels
- Sub-frames
- Visible Mullions

## FINISHES

- **2 coat Fluoropolymer:** Kynar® 500 / custom colors available in 70% PVDF (AAMA 2605). Living Building Challenge (LBC) Red List Free.
- **3 coat Fluoropolymer:** Kynar 500 / Hylar 5000 custom colors available in 70% PVDF (AAMA 2605). LBC Red List Free.
- **Anodic finishes:** Class I and Class II in Clear, Light/Medium/Dark Bronze, Champagne, and Black.
- **Prime coat**
- **Mill**



Vertical Section

Plan View

Qty.	Size:		Mullion Type	No. of Sections	Notes
	Actual <input type="checkbox"/>	M.O. <input type="checkbox"/>			
	Width	Height			
<input type="checkbox"/>	Sill flashing:		Project:		
<input type="checkbox"/>	Screen:		Location:		
<input type="checkbox"/>	Finish:		Architect:		
	Color:		Representative:		
<input type="checkbox"/>	Other:		Date:	Job #:	



# MODEL 670

## SUGGESTED SPECIFICATIONS

General: Furnish and install where indicated on drawings 6" (152mm) Adjustable Louver Model 670 as manufactured by Industrial Louvers, Inc., Delano, MN.

Material: Extruded aluminum frames and blades shall be one piece 6063-T6 alloy. Frame shall have a material thickness of .081" (2.1mm). Adjustable blades shall have a material thickness of .081" (2.1mm). Exposed linkage shall be interconnected with .75" x .125" aluminum flat bar. Blades operate on .375" pins with stainless steel ball bearings in cadmium plated races. Blade edge seals are included.

### Performance

- Free area (4' x 4' louver) = 9.81 sq. ft. (61.3%)

## Free Area

Square Feet (Square Meters)						
Free Area AMCA Licensed for openings up to 72" x 120"						
For free area data for larger openings, contact factory.						
3048.0	0.44	1.02	1.60	2.18	2.76	3.34
<b>120</b>	<b>4.90</b>	<b>10.77</b>	<b>16.65</b>	<b>22.53</b>	<b>28.40</b>	<b>34.28</b>
2743.2	0.39	0.91	1.43	1.96	2.48	3.00
<b>108</b>	<b>4.50</b>	<b>9.91</b>	<b>15.31</b>	<b>20.71</b>	<b>26.11</b>	<b>31.52</b>
2438.4	0.35	0.81	1.27	1.73	2.19	2.66
<b>96</b>	<b>3.91</b>	<b>8.60</b>	<b>13.29</b>	<b>17.99</b>	<b>22.68</b>	<b>27.37</b>
2133.6	0.30	0.70	1.11	1.51	1.91	2.31
<b>84</b>	<b>3.52</b>	<b>7.73</b>	<b>11.95</b>	<b>16.17</b>	<b>20.39</b>	<b>24.61</b>
1828.8	0.26	0.60	0.94	1.28	1.63	1.97
<b>72</b>	<b>3.12</b>	<b>6.86</b>	<b>10.61</b>	<b>14.35</b>	<b>18.10</b>	<b>21.84</b>
1524	0.21	0.50	0.78	1.06	1.34	1.63
<b>60</b>	<b>2.53</b>	<b>5.56</b>	<b>8.59</b>	<b>11.63</b>	<b>14.66</b>	<b>17.69</b>
1219.2	0.17	0.39	0.61	0.84	1.06	1.28
<b>48</b>	<b>2.13</b>	<b>4.69</b>	<b>7.25</b>	<b>9.81</b>	<b>12.37</b>	<b>14.93</b>
914.4	0.12	0.29	0.45	0.61	0.78	0.94
<b>36</b>	<b>1.54</b>	<b>3.39</b>	<b>5.24</b>	<b>7.08</b>	<b>8.93</b>	<b>10.78</b>
609.6	0.08	0.18	0.29	0.39	0.49	0.60
<b>24</b>	<b>1.15</b>	<b>2.52</b>	<b>3.89</b>	<b>5.27</b>	<b>6.64</b>	<b>8.02</b>
304.8	0.03	0.08	0.12	0.17	0.21	0.26
<b>12</b>	<b>0.75</b>	<b>1.65</b>	<b>2.55</b>	<b>3.45</b>	<b>4.35</b>	<b>5.25</b>
<b>H/W</b>	304.8	609.6	914.4	1219	1524	1829
	<b>12</b>	<b>24</b>	<b>36</b>	<b>48</b>	<b>60</b>	<b>72</b>

