



MODEL SP737

STANDARD CONSTRUCTION

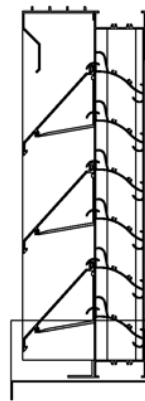
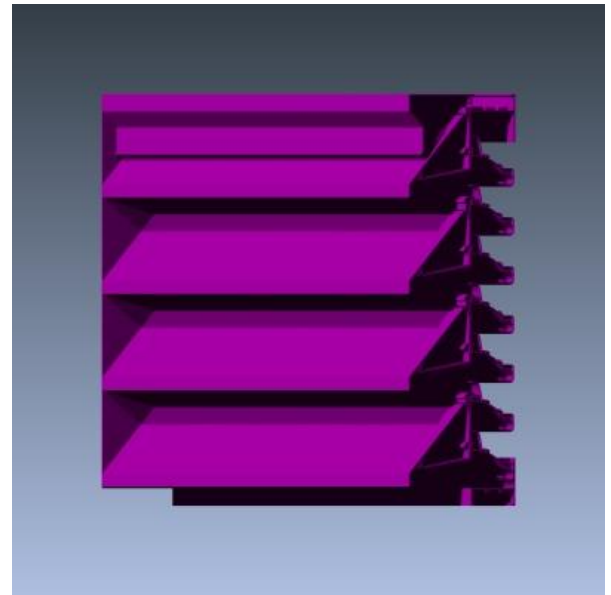
- **Material:** Extruded Aluminum 6063-T6
- **Frame:** 7" (178 mm) deep, .081" (2.1 mm) nominal wall thickness
- **Front Blades:** 4" (102 mm) deep, .081" (2.1 mm) nominal wall thickness
- **Rear Blade:** 3" (76 mm) deep, .063" (1.6 mm) nominal wall thickness
- **Blade Spacing:** 5.5" (140 mm) on center
- **Screen:** 1/2" x .063" flattened expanded bird screen and/or 18 x 14 mesh charcoal insect screen.
- **Finish:** Mill

OPTIONAL ACCESSORIES

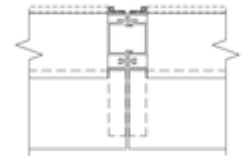
- Extended Sill Flashing
- Insulated and Non-insulated Blank-off Panels
- Flanged & Glazing Frames of various sizes
- Hinged Access Panels
- Sub-frames
- Visible Mullions
- Invisible Mullions for continuous blade appearance

FINISHES

- **2 coat Fluoropolymer:** Kynar® 500 / custom colors available in 70% PVDF (AAMA 2605). Living Building Challenge (LBC) Red List free.
- **3 coat Fluoropolymer:** Kynar 500 / Hylar 5000 custom colors available in 70% PVDF (AAMA 2605). LBC Red List Free.
- **Anodic finishes:** Class I and Class II in Clear, Light/Medium/Dark Bronze, Champagne, and Black.
- **Prime coat**
- **Mill**



Vertical Section



Invisible Vertical Mullion



Plan View

| Qty. | Size: | | Mullion Type | No. of Sections | Notes |
|--------------------------|---------------------------------|-------------------------------|-----------------|-----------------|-------|
| | Actual <input type="checkbox"/> | M.O. <input type="checkbox"/> | | | |
| | Width | Height | | | |
| <input type="checkbox"/> | Sill flashing: | | Project: | | |
| <input type="checkbox"/> | Screen: | | Location: | | |
| <input type="checkbox"/> | Finish: | | Architect: | | |
| | Color: | | Representative: | | |
| <input type="checkbox"/> | Other: | | Date: | Job #: | |





MODEL SP737

SUGGESTED SPECIFICATIONS

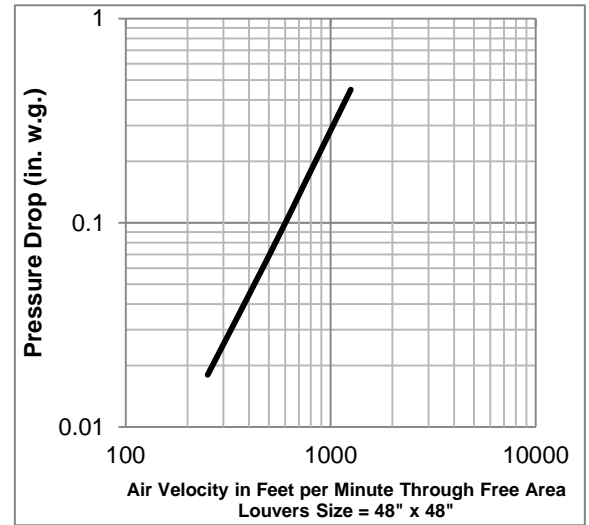
General: Furnish and install where indicated on drawings 7" (178mm) Storm Performance Louver Model SP737 as manufactured by Industrial Louvers, Inc., Delano, MN.

Material: Extruded aluminum frames and blades shall be one piece 6063-T6 alloy, designed to collect and drain water to the exterior at the sill by means of integral gutters in the blades and jamb frames. Frame shall have a material thickness of .081" (2.1mm). Fixed front blades shall have a material thickness of .081" (2.1mm). Fixed rear blades shall have a material thickness of .063" (1.6mm). Frames and blades shall be joined by stainless steel mechanical fastener, and frame will be caulked to prevent water penetration to interior wall construction.

Performance

- Free area (4' x 4' louver) = 7.09 sq. ft. (44.3%)
- Free area velocity at point of beginning water penetration (.01 oz/sq. ft.) = 813.2 fpm
- Pressure drop @ 724.3 FPM velocity = .15" water
- Air volume @ 724.3 FPM free area velocity = 5,135.29 CFM

Air Performance Chart

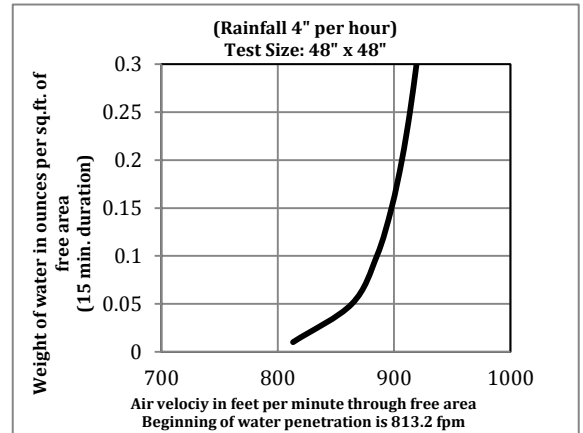


The AMCA Certified Ratings Seal applies to Air Capacities in the intake model only
Data corrected to standard air density.
Tested to AMCA 500-L, Figure 5.6

Free Area

| Square Feet (Square Meters) | | | | | | |
|--|-------------|-------------|--------------|--------------|--------------|--------------|
| Free Area AMCA Licensed for openings up to 72" x 120" | | | | | | |
| For free area data for larger openings, contact factory. | | | | | | |
| 3048.0 | 0.38 | 0.85 | 1.32 | 1.79 | 2.26 | 2.73 |
| 120 | 4.11 | 9.17 | 14.23 | 19.30 | 24.36 | 29.42 |
| 2743.2 | 0.34 | 0.75 | 1.17 | 1.58 | 2.00 | 2.41 |
| 108 | 3.63 | 8.10 | 12.57 | 17.03 | 21.50 | 25.97 |
| 2438.4 | 0.30 | 0.67 | 1.04 | 1.41 | 1.79 | 2.16 |
| 96 | 3.24 | 7.24 | 11.23 | 15.23 | 19.22 | 23.21 |
| 2133.6 | 0.26 | 0.57 | 0.89 | 1.20 | 1.52 | 1.84 |
| 84 | 2.76 | 6.16 | 9.56 | 12.97 | 16.37 | 19.77 |
| 1828.8 | 0.22 | 0.49 | 0.76 | 1.04 | 1.31 | 1.58 |
| 72 | 2.38 | 5.30 | 8.23 | 11.16 | 14.08 | 17.01 |
| 1524 | 0.19 | 0.41 | 0.64 | 0.87 | 1.10 | 1.32 |
| 60 | 1.99 | 4.44 | 6.90 | 9.35 | 11.80 | 14.25 |
| 1219.2 | 0.14 | 0.31 | 0.49 | 0.66 | 0.83 | 1.00 |
| 48 | 1.51 | 3.37 | 5.23 | 7.09 | 8.95 | 10.81 |
| 914.4 | 0.10 | 0.23 | 0.36 | 0.49 | 0.62 | 0.75 |
| 36 | 1.13 | 2.51 | 3.90 | 5.28 | 6.66 | 8.05 |
| 609.6 | 0.07 | 0.15 | 0.24 | 0.32 | 0.41 | 0.49 |
| 24 | 0.74 | 1.65 | 2.56 | 3.47 | 4.38 | 5.29 |
| 304.8 | 0.02 | 0.05 | 0.08 | 0.11 | 0.14 | 0.17 |
| 12 | 0.26 | 0.58 | 0.89 | 1.21 | 1.53 | 1.85 |
| H/W | 304.8 | 609.6 | 914.4 | 1219 | 1524 | 1829 |
| | 12 | 24 | 36 | 48 | 60 | 72 |

Water Penetration Chart



Wind Driven Rain Chart

| | | Rainfall rate of 3" per hour (76 mm) and a wind velocity of 29 mph (47 kph). | | | Rainfall rate of 8" per hour (76 mm) and a wind velocity of 50 mph (47 kph). | | |
|--------------------------------|----------------------|--|--------------------------|---------------------|--|-------|----------------------|
| Ventilation Air Velocity (m/s) | Core Velocity (fpm) | Rating Effectiveness | Class | Core Velocity (fpm) | Rating Effectiveness | Class | |
| 0.0 | | 99.8% | A | | 98.5% | B | |
| 0.5 | 98 | 99.3% | A | 116 | 97.4% | B | |
| 1.0 | 188 | 99.2% | A | 209 | 96.8% | B | |
| 1.5 | 281 | 97.8% | B | 297 | 95.6% | B | |
| 2.0 | 382 | 96.2% | B | 404 | 93.6% | C | |
| 2.5 | 491 | 90.9% | C | 494 | 91.7% | C | |
| 3.0 | 575 | 87.3% | C | 571 | 88.0% | C | |
| 3.5 | 676 | 88.3% | C | 678 | 76.8% | D | |
| Effectiveness Rating | A = 1 to 0.99 | | B = 0.989 to 0.95 | | C = 0.949 to 0.080 | | D = 0.80 to 0 |



Industrial Louvers, Inc. certifies that Model SP737 shown hereon is licensed to bear the AMCA Seal. The ratings shown are based on tests and procedures performed in accordance with AMCA Publication 511 and comply with the requirements of the AMCA Certified Ratings Program. The AMCA Certified Ratings Seal applies to air performance ratings and wind driven rain. Hylar® and Kynar® are registered trademark of Solvay Solexix, Inc. © 2015 Industrial Louvers. All rights reserved.

CATALOG NO. SP737 Rev: FEB 2015



www.industriallouvers.com
info@industriallouvers.com

511 South 7th Street, Delano MN 55328
Tel: +1.763.972.2981 • Fax: +1.763.972.2911