

MODEL 652DD

STANDARD CONSTRUCTION

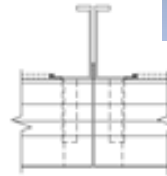
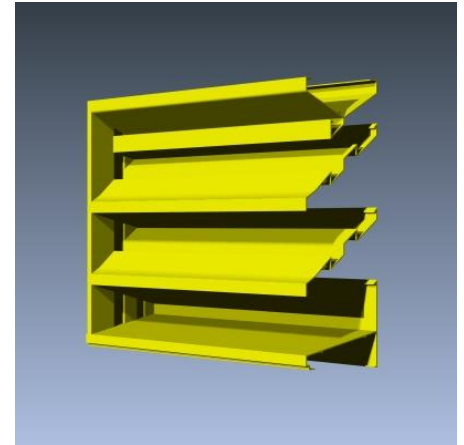
- **Material:** Extruded Aluminum 6063-T6
- **Frame:** 6" (152mm) deep, .081" (2.1mm) nominal wall thickness
- **Blades:** 6" (152mm) deep, .081" (2.1mm) nominal wall thickness
- **Blade Spacing:** 6" (152mm) on center
- **Screen:** 1/2" x .063" flattened expanded bird screen and/or 18 x 14 mesh charcoal insect screen.
- **Finish:** Mill

OPTIONAL ACCESSORIES

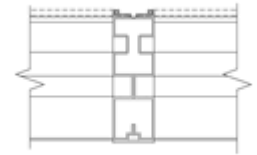
- Extended Sill Flashing
- Insulated and Non-insulated Blank-off Panels
- Flanged & Glazing Frames of various sizes
- Hinged Access Panels
- Sub-frames
- Visible Mullions
- Invisible Mullions for continuous blade appearance

FINISHES

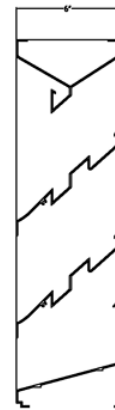
- **2 coat Fluoropolymer:** Kynar® 500 / custom colors available in 70% PVDF (AAMA 2605). Living Building Challenge (LBC) Red List Free.
- **3 coat Fluoropolymer:** Kynar 500 / Hylar 5000 custom colors available in 70% PVDF (AAMA 2605). LBC Red List Free.
- **Anodic finishes:** Class I and Class II in Clear, Light/Medium/Dark Bronze, Champagne, and Black.
- **Prime coat**
- **Mill**



Invisible Vertical Mullion



Visible Vertical Mullion



Vertical Section



Plan View

Qty.	Size:		M.O. <input type="checkbox"/>	Mullion Type	No. of Sections	Notes
	Width	Height				
<input type="checkbox"/>	Sill flashing:			Project:		
<input type="checkbox"/>	Screen:			Location:		
<input type="checkbox"/>	Finish:			Architect:		
	Color:			Representative:		
<input type="checkbox"/>	Other:			Date:	Job #:	



MODEL 652DD

SUGGESTED SPECIFICATIONS

General: Furnish and install where indicated on drawings 6" (102mm) Extra Performance Weather Resistant Louver Model 652DD as manufactured by Industrial Louvers, Inc., Delano, MN.

Material: Extruded aluminum frames and blades shall be one piece 6063-T6 alloy. Frame shall have a material thickness of .081" (2.1mm). Fixed blades shall have a material thickness of .081" (2.1mm). Frames and blades shall be joined by stainless steel mechanical fastener, and frame will be caulked to prevent water penetration to interior wall construction.

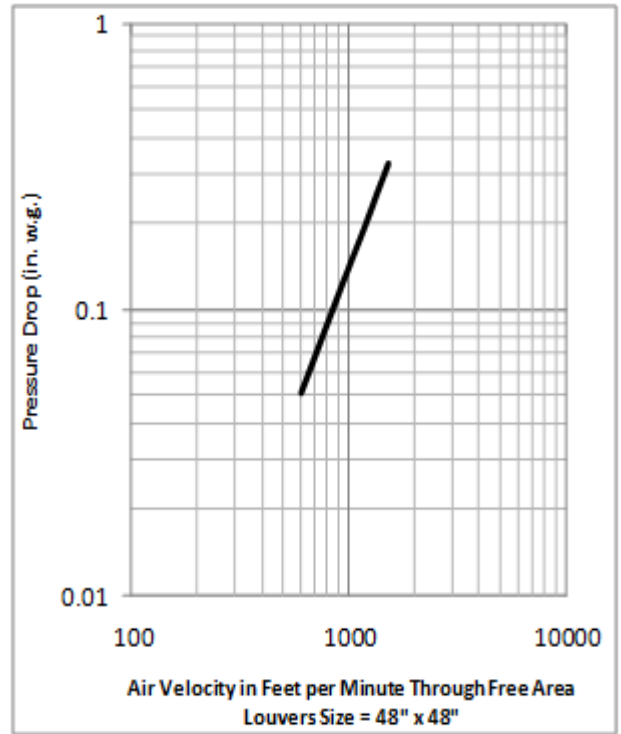
Performance

- Free area (4' x 4' louver) = 8.24sq. ft. (51.5%)
- Free area velocity at point of beginning water penetration (.01 oz/sq. ft.) = 932.6fpm
- Pressure drop @ 1039.1 FPM velocity = .15" water
- Air volume @ 1039.1FPM free area velocity = 8,562.18 CFM

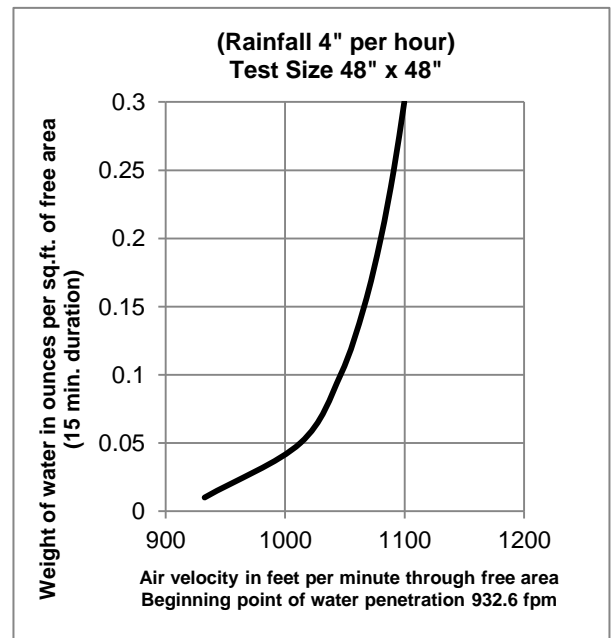
Free Area

Square Feet (Square Meters)						
Free Area AMCA Licensed for openings up to 72" x 120"						
For free area data for larger openings, contact factory.						
3048.0	0.46	1.01	1.56	2.12	2.67	3.22
120	4.95	10.89	16.83	22.77	28.71	34.65
2743.2	0.41	0.90	1.40	1.89	2.38	2.88
108	4.42	9.73	15.04	20.35	25.66	30.96
2438.4	0.36	0.80	1.23	1.67	2.10	2.53
96	3.90	8.57	13.25	17.93	22.60	27.28
2133.6	0.31	0.69	1.06	1.44	1.82	2.19
84	3.37	7.41	11.46	15.50	19.55	23.59
1828.8	0.26	0.58	0.90	1.22	1.53	1.85
72	2.84	6.26	9.67	13.08	16.49	19.91
1524	0.22	0.47	0.73	0.99	1.25	1.51
60	2.32	5.10	7.88	10.66	13.44	16.22
1219.2	0.17	0.37	0.57	0.77	0.96	1.16
48	1.79	3.94	6.09	8.24	10.38	12.53
914.4	0.12	0.26	0.40	0.54	0.68	0.82
36	1.26	2.78	4.30	5.81	7.33	8.85
609.6	0.07	0.15	0.23	0.32	0.40	0.48
24	0.74	1.62	2.51	3.39	4.28	5.16
304.8	0.02	0.04	0.07	0.09	0.11	0.14
12	0.21	0.46	0.72	0.97	1.22	1.47
H/W	304.8	609.6	914.4	1219	1524	1829
	12	24	36	48	60	72

Air Performance Chart



Water Penetration Chart



CATALOG NO. 652DD Rev: MARCH 2015



www.industriallouvers.com
 info@industriallouvers.com

511 South 7th Street, Delano MN 55328
 Tel: +1.763.972.2981 • Fax: +1.763.972.2911