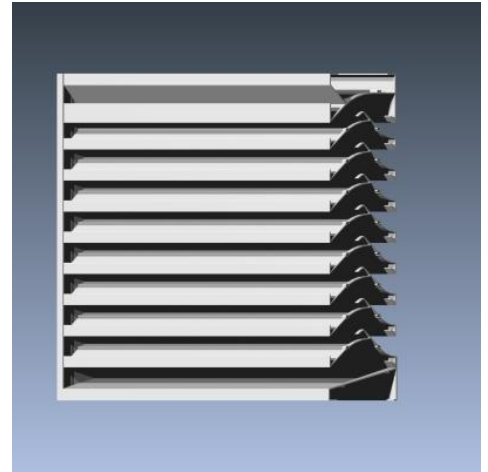


# MODEL 537XP



## STANDARD CONSTRUCTION

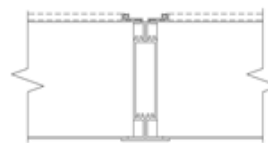
- **Material:** Extruded Aluminum 6063-T6
- **Frame:** 5" (127mm) deep, .081" (2.1mm) nominal wall thickness
- **Blades:** 5" (127mm) deep, .063" (1.6mm) nominal wall thickness
- **Blade Spacing:** 2.25" (57mm) on center
- **Screen:** 1/2" x .063" flattened expanded bird screen and/or 18 x 14 mesh charcoal insect screen.
- **Finish:** Mill

## OPTIONAL ACCESSORIES

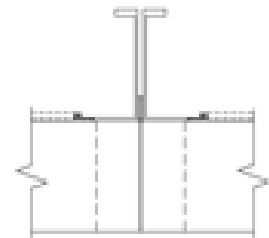
- Extended Sill Flashing
- Insulated and Non-insulated Blank-off Panels
- Flanged & Glazing Frames of various sizes
- Hinged Access Panels
- Sub-frames
- Visible Mullions
- Invisible Mullions for continuous blade appearance

## FINISHES

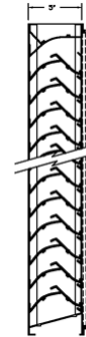
- **2 coat Fluoropolymer:** Kynar® 500 / custom colors available in 70% PVDF (AAMA 2605). Living Building Challenge (LBC) Red List Free.
- **3 coat Fluoropolymer:** Kynar 500 / Hylar 5000 custom colors available in 70% PVDF (AAMA 2605). LBC Red List Free.
- **Anodic finishes:** Class I and Class II in Clear, Light/Medium/Dark Bronze, Champagne, and Black.
- **Prime coat**
- **Mill**



Visible Vertical Mullion



Invisible Vertical Mullion



Vertical Section



Plan View

Qty.	Size:		M.O. <input type="checkbox"/>	Mullion Type	No. of Sections	Notes
	Width	Height				
<input type="checkbox"/>	Sill flashing:			Project:		
<input type="checkbox"/>	Screen:			Location:		
<input type="checkbox"/>	Finish:			Architect:		
	Color:			Representative:		
<input type="checkbox"/>	Other:			Date:	Job #:	



# MODEL 537XP

## SUGGESTED SPECIFICATIONS

**General:** Furnish and install where indicated on drawings " (102mm) Extra Performance Weather Resistant Sightproof Louver Model 537XP as manufactured by Industrial Louvers, Inc., Delano, MN.

**Material:** Extruded aluminum frames and blades shall be one piece 6063-T6 alloy, designed to collect and drain water to the exterior at the sill by means of integral gutters in the blades and jamb frames. Frame shall have a material thickness of .081" (2.1mm). Fixed blades shall have a material thickness of .063" (1.6mm). Frames and blades shall be joined by stainless steel mechanical fastener, and frame will be caulked to prevent water penetration to interior wall construction.

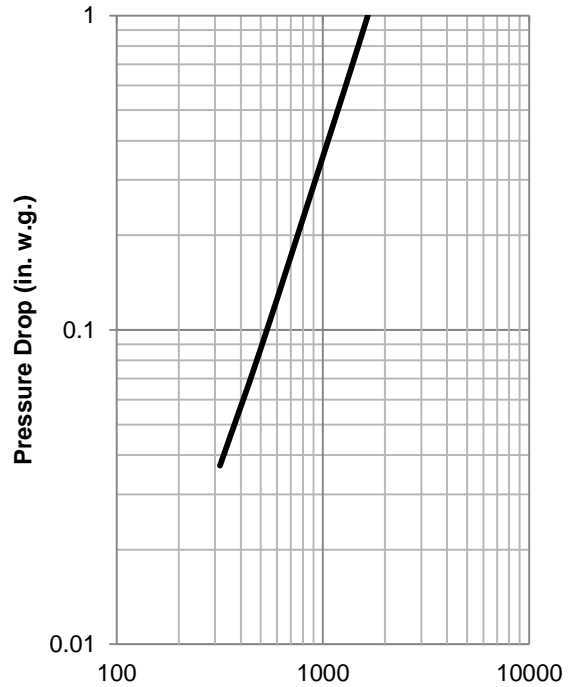
### Performance

- Free area (4' x 4' louver) = 8.35 sq. ft. (52.2%)
- Free area velocity at point of beginning water penetration (.01 oz/sq. ft.) = 1131.9 fpm
- Pressure drop @ 635.9 FPM velocity = .15" water
- Air volume @ 635.9 FPM free area velocity = 5309.8 CFM

### Free Area

Square Feet (Square Meters)						
Free Area AMCA Licensed for openings up to 72" x 120"						
For free area data for larger openings, contact factory.						
3048.0	0.47	1.01	1.54	2.08	2.62	3.15
<b>120</b>	<b>5.05</b>	<b>10.83</b>	<b>16.60</b>	<b>22.37</b>	<b>28.15</b>	<b>33.92</b>
2743.2	0.42	0.91	1.39	1.88	2.36	2.84
<b>108</b>	<b>4.56</b>	<b>9.77</b>	<b>14.97</b>	<b>20.18</b>	<b>25.39</b>	<b>30.60</b>
2438.4	0.37	0.79	1.21	1.63	2.05	2.47
<b>96</b>	<b>3.96</b>	<b>8.49</b>	<b>13.02</b>	<b>17.55</b>	<b>22.08</b>	<b>26.61</b>
2133.6	0.32	0.69	1.06	1.43	1.80	2.16
<b>84</b>	<b>3.47</b>	<b>7.43</b>	<b>11.40</b>	<b>15.36</b>	<b>19.33</b>	<b>23.29</b>
1828.8	0.28	0.59	0.91	1.22	1.54	1.86
<b>72</b>	<b>2.97</b>	<b>6.37</b>	<b>9.77</b>	<b>13.17</b>	<b>16.57</b>	<b>19.97</b>
1524	0.22	0.47	0.73	0.98	1.23	1.49
<b>60</b>	<b>2.38</b>	<b>5.10</b>	<b>7.82</b>	<b>10.54</b>	<b>13.26</b>	<b>15.98</b>
1219.2	0.18	0.38	0.58	0.78	0.98	1.18
<b>48</b>	<b>1.89</b>	<b>4.04</b>	<b>6.20</b>	<b>8.35</b>	<b>10.51</b>	<b>12.66</b>
914.4	0.13	0.28	0.42	0.57	0.72	0.87
<b>36</b>	<b>1.39</b>	<b>2.98</b>	<b>4.57</b>	<b>6.16</b>	<b>7.75</b>	<b>9.34</b>
609.6	0.07	0.16	0.24	0.33	0.41	0.50
<b>24</b>	<b>0.80</b>	<b>1.71</b>	<b>2.62</b>	<b>3.53</b>	<b>4.44</b>	<b>5.36</b>
304.8	0.03	0.06	0.09	0.12	0.16	0.19
<b>12</b>	<b>0.30</b>	<b>0.65</b>	<b>0.99</b>	<b>1.34</b>	<b>1.69</b>	<b>2.03</b>
<b>H/W</b>	304.8	609.6	914.4	1219	1524	1829
	<b>12</b>	<b>24</b>	<b>36</b>	<b>48</b>	<b>60</b>	<b>72</b>

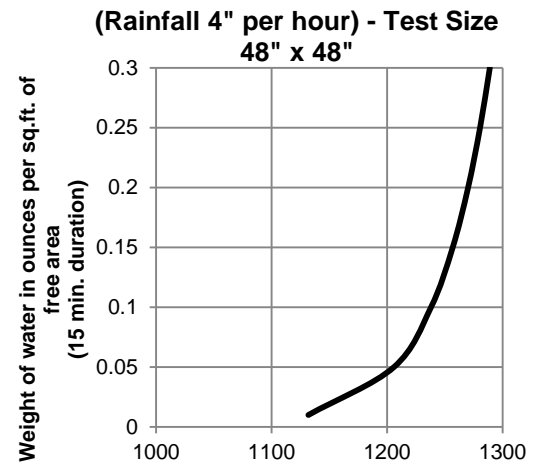
## Air Performance Chart



**Air Velocity in Feet per Minute Through Free Area Louvers Size = 48" x 48"**

The AMCA Certified Ratings Seal applies to Air Capacities in the intake model only

## Water Penetration Chart



**(Rainfall 4" per hour) - Test Size 48" x 48"**  
Air velocity in feet per minute through free area Beginning point of water penetration 1131.9 fpm



Industrial Louvers, Inc. certifies that Model 537XP shown hereon is licensed to bear the AMCA Seal. The ratings shown are based on tests and procedures performed in accordance with AMCA Publication 511 and comply with the requirements of the AMCA Certified Ratings Program. The AMCA Certified Ratings Seal applies to air performance ratings and water penetration ratings. Hylar® and Kynar® are registered trademark of Solvay Solexix, Inc. © 2015 Industrial Louvers. All rights reserved.

CATALOG NO. 537XP Rev: JUNE 2016



www.industriallouvers.com  
info@industriallouvers.com

511 South 7th Street, Delano MN 55328  
Tel: +1.763.972.2981 • Fax: +1.763.972.2911