



# MODEL 653XP

## STANDARD CONSTRUCTION

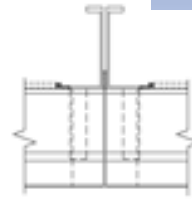
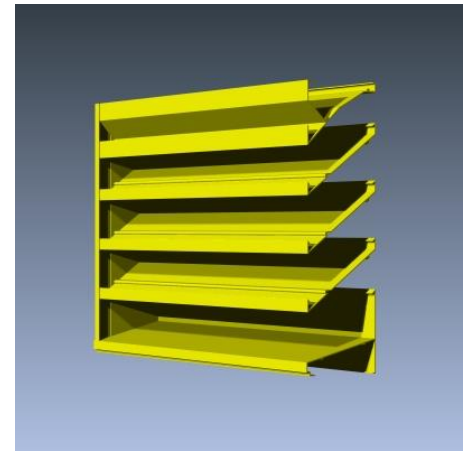
- **Material:** Extruded Aluminum 6063-T6
- **Frame:** 6" (152mm) deep, .081" (2.1mm) nominal wall thickness
- **Blades:** 6" (152mm) deep, .081" (2.1mm) nominal wall thickness
- **Blade Spacing:** 4.25" (108mm) on center
- **Finish:** Mill

## OPTIONAL ACCESSORIES

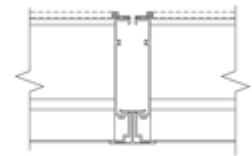
- Screen: 1/2" x .063" flattened expanded bird screen and/or 18 x 14 mesh charcoal insect screen.
- Extended Sill Flashing
- Insulated and Non-insulated Blank-off Panels
- Flanged & Glazing Frames of various sizes
- Hinged Access Panels
- Sub-frames
- Visible Mullions
- Invisible Mullions for continuous blade appearance

## FINISHES

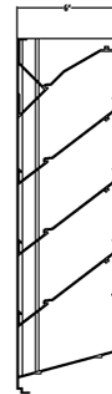
- **2 coat Fluoropolymer:** Kynar® 500 / custom colors available in 70% PVDF (AAMA 2605). Living Building Challenge (LBC) Red List Free.
- **3 coat Fluoropolymer:** Kynar 500 / Hylar 5000 custom colors available in 70% PVDF (AAMA 2605). LBC Red List Free.
- **Anodic finishes:** Class I and Class II in Clear, Light/Medium/Dark Bronze, Champagne, and Black.
- **Prime coat**



Invisible Vertical Mullion



Visible Vertical Mullion



Vertical Section



Plan View

Qty.	Size:		M.O. <input type="checkbox"/>	Mullion Type	No. of Sections	Notes
	Actual <input type="checkbox"/>	Width				
<input type="checkbox"/>	Sill flashing:			Project:		
<input type="checkbox"/>	Screen:			Location:		
<input type="checkbox"/>	Finish:			Architect:		
	Color:			Representative:		
<input type="checkbox"/>	Other:			Date:	Job #:	



# MODEL 653XP

## SUGGESTED SPECIFICATIONS

**General:** Furnish and install where indicated on drawings 6" (152mm) Extra Performance Weather Resistant Louver Model 653XP as manufactured by Industrial Louvers, Inc., Delano, MN.

**Material:** Extruded aluminum frames and blades shall be one piece 6063-T6 alloy. Frame shall have a material thickness of .081" (2.1mm). Fixed blades shall have a material thickness of .081" (2.1mm). Frames and blades shall be joined by stainless steel mechanical fastener, and frame will be caulked to prevent water penetration to interior wall construction.

## Performance

- Free area (4' x 4' louver) = 8.19 sq. ft. (51.4%)
- Free area velocity at point of beginning water penetration (.01 oz/sq. ft.) = 1131.8 fpm
- Pressure drop @ 1002 FPM velocity = .15" water
- Air volume @ 1002 FPM free area velocity = 8210 CFM

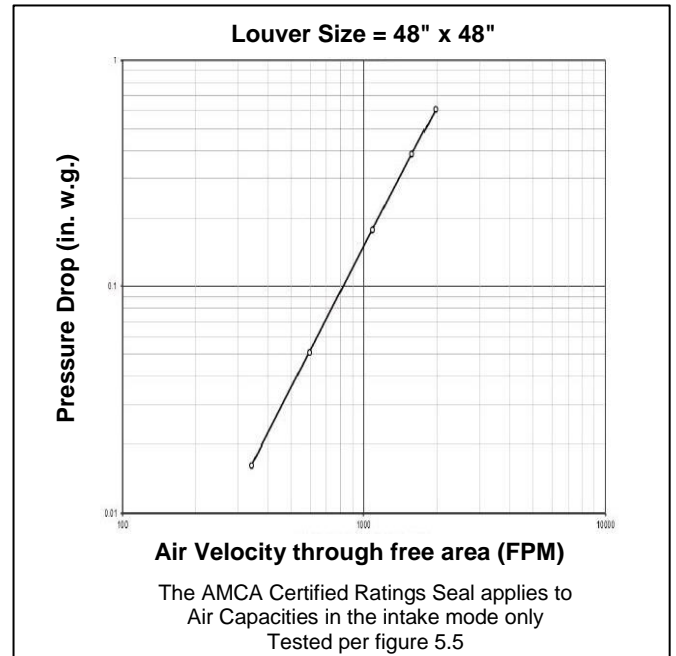
## Free Area

Square Feet (Square Meters)						
Free Area AMCA Licensed for openings up to 72" x 120"						
For free area data for larger openings, contact factory.						
3048.0	0.45	1.00	1.54	2.09	2.63	2.98
<b>120</b>	<b>4.88</b>	<b>10.73</b>	<b>16.59</b>	<b>22.44</b>	<b>28.30</b>	<b>32.08</b>
2743.2	0.41	0.89	1.38	1.87	2.36	2.67
<b>108</b>	<b>4.37</b>	<b>9.62</b>	<b>14.86</b>	<b>20.11</b>	<b>25.36</b>	<b>28.74</b>
2438.4	0.36	0.79	1.22	1.65	2.08	2.36
<b>96</b>	<b>3.86</b>	<b>8.50</b>	<b>13.14</b>	<b>17.77</b>	<b>22.41</b>	<b>25.41</b>
2133.6	0.31	0.69	1.06	1.43	1.81	2.05
<b>84</b>	<b>3.36</b>	<b>7.38</b>	<b>11.41</b>	<b>15.44</b>	<b>19.47</b>	<b>22.07</b>
1828.8	0.26	0.58	0.90	1.22	1.54	1.74
<b>72</b>	<b>2.85</b>	<b>6.27</b>	<b>9.69</b>	<b>13.10</b>	<b>16.52</b>	<b>18.73</b>
1524	0.22	0.48	0.74	1.00	1.26	1.43
<b>60</b>	<b>2.34</b>	<b>5.15</b>	<b>7.96</b>	<b>10.77</b>	<b>13.58</b>	<b>15.39</b>
1219.2	0.17	0.36	0.56	0.76	0.96	1.09
<b>48</b>	<b>1.78</b>	<b>3.92</b>	<b>6.05</b>	<b>8.19</b>	<b>10.32</b>	<b>11.70</b>
914.4	0.12	0.26	0.40	0.54	0.69	0.78
<b>36</b>	<b>1.27</b>	<b>2.80</b>	<b>4.33</b>	<b>5.85</b>	<b>7.38</b>	<b>8.37</b>
609.6	0.07	0.16	0.24	0.33	0.41	0.47
<b>24</b>	<b>0.76</b>	<b>1.68</b>	<b>2.60</b>	<b>3.52</b>	<b>4.44</b>	<b>5.03</b>
304.8	0.02	0.05	0.08	0.11	0.14	0.16
<b>12</b>	<b>0.26</b>	<b>0.57</b>	<b>0.87</b>	<b>1.18</b>	<b>1.49</b>	<b>1.69</b>
<b>H/W</b>	304.8	609.6	914.4	1219	1524	1829
	<b>12</b>	<b>24</b>	<b>36</b>	<b>48</b>	<b>60</b>	<b>72</b>



Industrial Louvers, Inc. certifies that Model 653XP shown hereon is licensed to bear the AMCA Seal. The ratings shown are based on tests and procedures performed in accordance with AMCA Publication 511 and comply with the requirements of the AMCA Certified Ratings Program. The AMCA Certified Ratings Seal applies to air performance ratings and water penetration ratings. Hylar® and Kynar® are registered trademarks of Solvay Solexix, Inc. © 2015 Industrial Louvers. All rights reserved.

## Air Performance Chart



## Water Penetration Chart

