

# MODEL 250

## STANDARD CONSTRUCTION

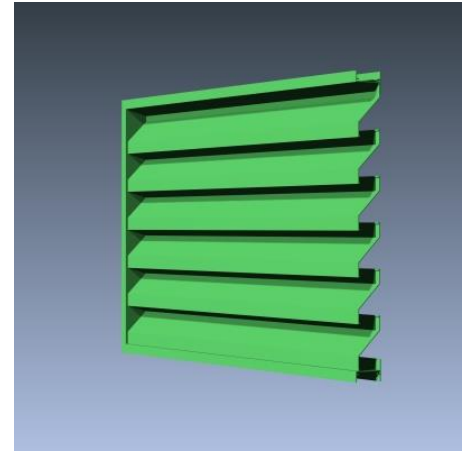
- **Material:** Extruded Aluminum 6063-T6
- **Frame:** 2" (51mm) deep, .063" (1.6mm) nominal wall thickness
- **Blades:** 2" (51mm) deep, .063" (1.6mm) nominal wall thickness
- **Blade Spacing:** 3.125" (79mm) on center
- **Finish:** Mill

## OPTIONAL ACCESSORIES

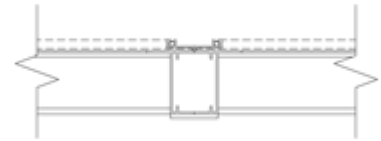
- Screen: 1/2" x .063" flattened expanded bird screen and/or 18 x 14 mesh charcoal insect screen.
- Extended Sill Flashing
- Insulated and Non-insulated Blank-off Panels
- Flanged & Glazing Frames of various sizes
- Hinged Access Panels
- Sub-frames
- Visible Mullions
- Invisible Mullions for continuous blade appearance

## FINISHES

- **2 coat Fluoropolymer:** Kynar® 500 / custom colors available in 70% PVDF (AAMA 2605). Living Building Challenge (LBC) Red List Free.
- **3 coat Fluoropolymer:** Kynar 500 / custom colors available in 70% PVDF (AAMA 2605). LBC Red List Free.
- **Anodic finishes:** Class I and Class II in Clear, Light/Medium/Dark Bronze, Champagne, and Black.
- Prime coat



Vertical Section



Visible Vertical Mullion



Plan View



Invisible Vertical Mullion

Qty.	Size:		M.O. <input type="checkbox"/>	Mullion Type	No. of Sections	Notes
	Width	Height				
<input type="checkbox"/>	Sill flashing:			Project:		
<input type="checkbox"/>	Screen:			Location:		
<input type="checkbox"/>	Finish:			Architect:		
	Color:			Representative:		
<input type="checkbox"/>	Other:			Date:	Job #:	



# MODEL 250

## SUGGESTED SPECIFICATIONS

General: Furnish and install where indicated on drawings 2" (51mm) Thinline Louver Model 250 as manufactured by Industrial Louvers, Inc., Delano, MN.

Material: Extruded aluminum frames and blades shall be one piece 6063-T6 alloy. Frame shall have a material thickness of .063" (1.6mm). Fixed blades shall have a material thickness of .063" (1.6mm). Frames and blades shall be joined by stainless steel mechanical fastener, and frame will be caulked to prevent water penetration to interior wall construction.

### Performance

- Free area (4' x 4' louver) = 6.28 sq. ft. (39.3%)

## Free Area

Square Feet (Square Meters)						
Free Area AMCA Licensed for openings up to 72" x 120"						
For free area data for larger openings, contact factory.						
3048.0	0.44	1.02	1.60	2.18	2.76	3.34
<b>120</b>	<b>3.17</b>	<b>7.40</b>	<b>11.63</b>	<b>15.86</b>	<b>20.09</b>	<b>24.31</b>
2743.2	0.39	0.91	1.43	1.96	2.48	3.00
<b>108</b>	<b>2.92</b>	<b>6.82</b>	<b>10.71</b>	<b>14.61</b>	<b>18.50</b>	<b>22.40</b>
2438.4	0.35	0.81	1.27	1.73	2.19	2.66
<b>96</b>	<b>2.59</b>	<b>6.04</b>	<b>9.49</b>	<b>12.94</b>	<b>16.39</b>	<b>19.85</b>
2133.6	0.30	0.70	1.11	1.51	1.91	2.31
<b>84</b>	<b>2.26</b>	<b>5.26</b>	<b>8.27</b>	<b>11.28</b>	<b>14.29</b>	<b>17.29</b>
1828.8	0.26	0.60	0.94	1.28	1.63	1.97
<b>72</b>	<b>1.92</b>	<b>4.49</b>	<b>7.05</b>	<b>9.61</b>	<b>12.18</b>	<b>14.74</b>
1524	0.21	0.50	0.78	1.06	1.34	1.63
<b>60</b>	<b>1.59</b>	<b>3.71</b>	<b>5.83</b>	<b>7.95</b>	<b>10.07</b>	<b>12.19</b>
1219.2	0.17	0.39	0.61	0.84	1.06	1.28
<b>48</b>	<b>1.26</b>	<b>2.93</b>	<b>4.61</b>	<b>6.28</b>	<b>7.96</b>	<b>9.63</b>
914.4	0.12	0.29	0.45	0.61	0.78	0.94
<b>36</b>	<b>1.01</b>	<b>2.35</b>	<b>3.69</b>	<b>5.03</b>	<b>6.38</b>	<b>7.72</b>
609.6	0.08	0.18	0.29	0.39	0.49	0.60
<b>24</b>	<b>0.67</b>	<b>1.57</b>	<b>2.47</b>	<b>3.37</b>	<b>4.27</b>	<b>5.17</b>
304.8	0.03	0.08	0.12	0.17	0.21	0.26
<b>12</b>	<b>0.34</b>	<b>0.80</b>	<b>1.25</b>	<b>1.70</b>	<b>2.16</b>	<b>2.61</b>
H/W	304.8	609.6	914.4	1219	1524	1829
	<b>12</b>	<b>24</b>	<b>36</b>	<b>48</b>	<b>60</b>	<b>72</b>

