



MODEL SP437V

STANDARD CONSTRUCTION

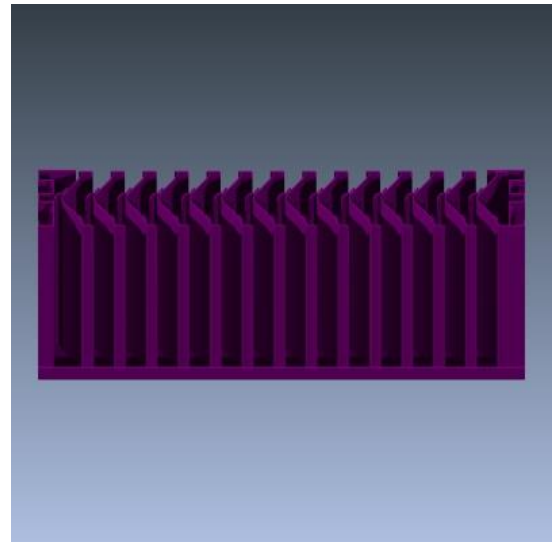
- **Material:** Extruded Aluminum 6063-T6
- **Frame:** 4" (102 mm) deep, .081" (2.1 mm) nominal wall thickness
- **Blades:** 4" (102 mm) deep, .081" (1.6 mm) nominal wall thickness
- **Blade Spacing:** 2" (51 mm) on center
- **Finish:** Mill

OPTIONAL ACCESSORIES

- Screen: 1/2" x .063" flattened expanded bird screen and/or 18 x 14 mesh charcoal insect screen.
- Extended Sill Flashing
- Insulated and Non-insulated Blank-off Panels
- Flanged & Glazing Frames of various sizes
- Hinged Access Panels
- Sub-frames
- Visible Mullions
- Invisible Mullions for continuous blade appearance

FINISHES

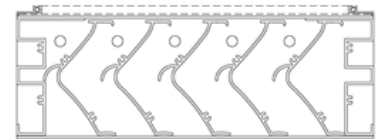
- **2 coat Fluoropolymer:** Kynar® 500 / custom colors available in 70% PVDF (AAMA 2605). Living Building Challenge (LBC) Red List Free.
- **3 coat Fluoropolymer:** Kynar 500 / Hylar 5000 custom colors available in 70% PVDF (AAMA 2605). LBC Red List Free.
- **Anodic finishes:** Class I and Class II in Clear, Light/Medium/Dark Bronze, Champagne, and Black.
- **Prime coat**



Vertical Section



Visible Vertical Mullion



Plan View

Qty.	Size:		Mullion Type	No. of Sections	Notes
	Actual <input type="checkbox"/>	M.O. <input type="checkbox"/>			
	Width	Height			
<input type="checkbox"/>	Sill flashing:		Project:		
<input type="checkbox"/>	Screen:		Location:		
<input type="checkbox"/>	Finish:		Architect:		
	Color:		Representative:		
<input type="checkbox"/>	Other:		Date:	Job #:	





MODEL SP437V

SUGGESTED SPECIFICATIONS

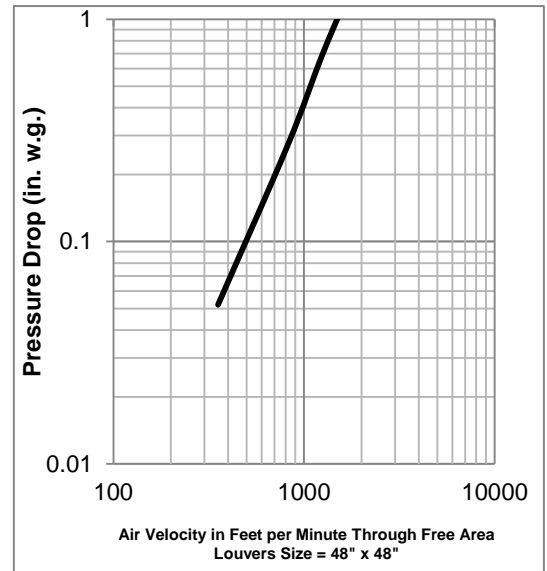
General: Furnish and install where indicated on drawings 4" (102mm) Storm Performance Louver Model SP437V as manufactured by Industrial Louvers, Inc., Delano, MN.

Material: Extruded aluminum frames and blades shall be one piece 6063-T6 alloy, designed to collect and drain water to the exterior at the sill by means of integral gutters in the blades and jamb frames. Frame shall have a material thickness of .081" (2.1mm). Fixed blades shall have a material thickness of .081" (2.1mm). Frames and blades shall be joined by stainless steel mechanical fastener, and frame will be caulked to prevent water penetration to interior wall construction.

Performance

- Free area (4' x 4' louver) = 7.17 sq. ft. (44.8%)
- Free area velocity at point of beginning water penetration (.01 oz/sq. ft.) = above 1,250 fpm
- Pressure drop @ 595.4 FPM velocity = .15" water
- Air volume @ 595.4 FPM free area velocity = 4,269.0 CFM

Air Performance Chart

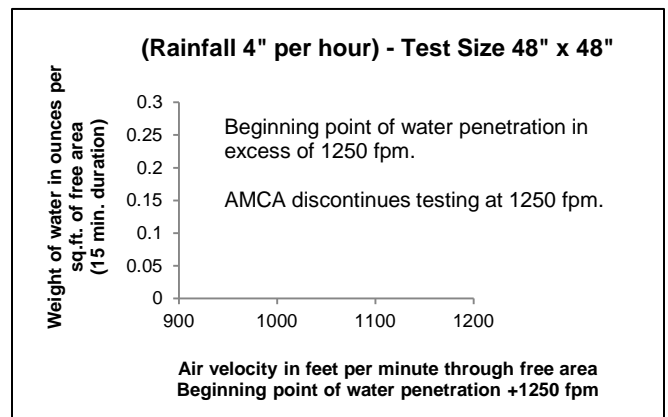


The AMCA Certified Ratings Seal applies to Air Capacities in the intake model only
Data corrected to standard air density Tested to AMCA 500-L, Figure 5.6

Free Area

Square Feet (Square Meters)						
Free Area AMCA Licensed for openings up to 72" x 120"						
For free area data for larger openings, contact factory.						
3048.0	0.29	0.77	1.25	1.73	2.21	2.69
120	3.14	8.31	13.47	18.64	23.81	28.98
2743.2	0.26	0.69	1.12	1.55	1.98	2.42
108	2.82	7.45	12.09	16.73	21.37	26.00
2438.4	0.23	0.61	0.99	1.38	1.76	2.14
96	2.49	6.60	10.71	14.82	18.92	23.03
2133.6	0.20	0.53	0.87	1.20	1.53	1.86
84	2.17	5.75	9.33	12.90	16.48	20.06
1828.8	0.17	0.46	0.74	1.02	1.30	1.59
72	1.85	4.90	7.95	10.99	14.04	17.09
1524	0.14	0.38	0.61	0.84	1.08	1.31
60	1.53	4.05	6.56	9.08	11.60	14.12
1219.2	0.11	0.30	0.48	0.67	0.85	1.04
48	1.21	3.19	5.18	7.17	9.16	11.14
914.4	0.08	0.22	0.35	0.49	0.62	0.76
36	0.89	2.34	3.80	5.26	6.72	8.17
609.6	0.05	0.14	0.22	0.31	0.40	0.48
24	0.56	1.49	2.42	3.35	4.27	5.20
304.8	0.02	0.06	0.10	0.13	0.17	0.21
12	0.24	0.64	1.04	1.43	1.83	2.23
H/W	304.8	609.6	914.4	1219	1524	1829
	12	24	36	48	60	72

Water Penetration Chart



Wind Driven Rain Chart

Ventilation Air Velocity (m/s)	Rainfall rate of 3" per hour (76 mm) and a wind velocity of 29 mph (47 kph).			Rainfall rate of 8" per hour (76 mm) and a wind velocity of 50 mph (47 kph).			
	Core Velocity (fpm)	Rating Effectiveness	Class	Core Velocity (fpm)	Rating Effectiveness	Class	
0.0		100.0%	A		100.0%	A	
0.5		100.0%	A		100.0%	A	
1.0		100.0%	A		100.0%	A	
1.5		100.0%	A		100.0%	A	
2.0	383	100.0%	A	385	100.0%	A	
2.5	463	99.9%	A	498	99.9%	A	
3.0	604	99.3%	A	588	99.3%	A	
3.5	678	92.6%	C	681	89.6%	C	
Effectiveness Rating	A = 1 to 0.99		B = 0.989 to 0.95		C = 0.949 to 0.080		D = 0.80 to 0



Industrial Louvers, Inc. certifies that Model SP437V shown hereon is licensed to bear the AMCA Seal. The ratings shown are based on tests and procedures performed in accordance with AMCA Publication 511 and comply with the requirements of the AMCA Certified Ratings Program. The AMCA Certified Ratings Seal applies to air performance ratings and wind driven rain. Hylar® and Kynar® are registered trademark of Solvay Solexix, Inc. © 2015 Industrial Louvers. All rights reserved.

CATALOG NO. SP437V Rev: FEB 2018



www.industriallouvers.com
info@industriallouvers.com

511 South 7th Street, Delano MN 55328
Tel: +1.763.972.2981 • Fax: +1.763.972.2911