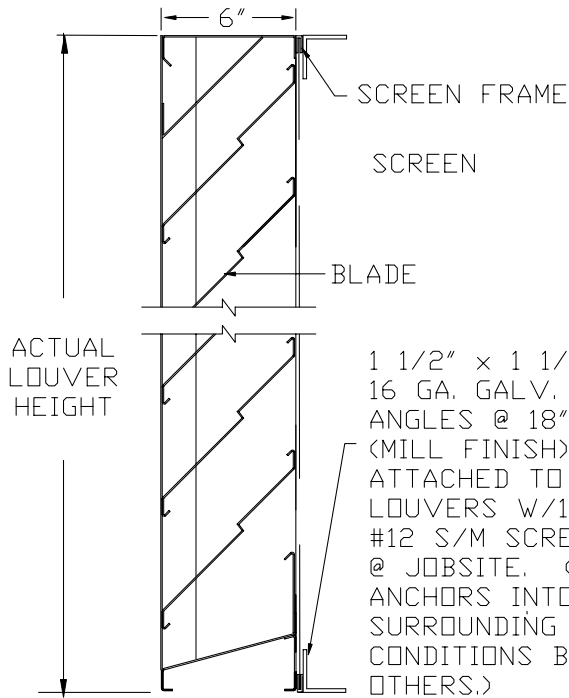
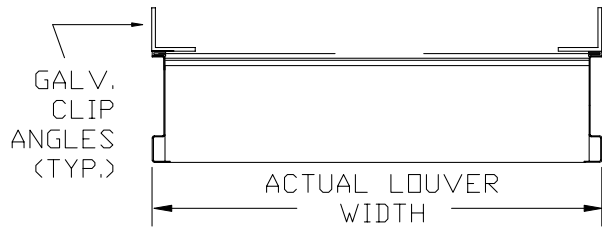


# MODEL 614SXP

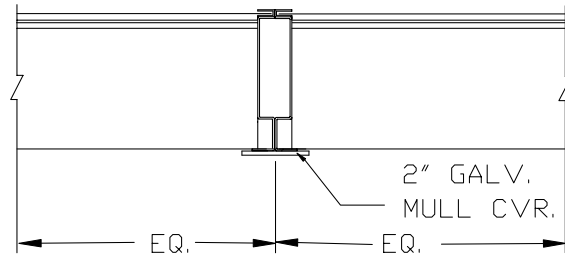


**VERTICAL SECTION**

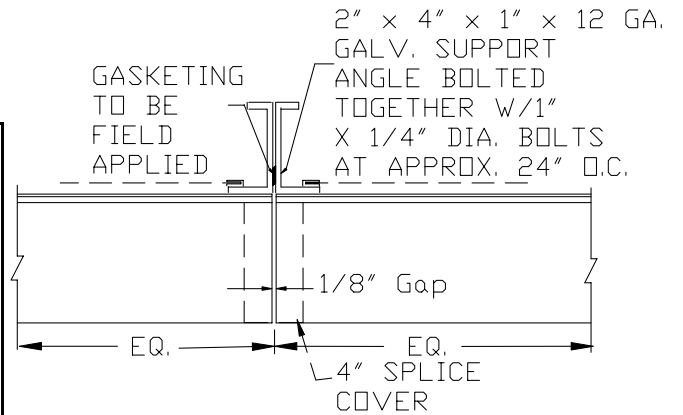


**HORIZONTAL SECTION**

1 1/2" x 1 1/2" x 16 GA. GALV. CLIP ANGLES @ 18" O/C. (MILL FINISH), ATTACHED TO LOUVERS W/1" X #12 S/M SCREWS @ JOBSITE. (ALL ANCHORS INTO SURROUNDING CONDITIONS BY OTHERS.)



**VISIBLE MULLION DETAIL**



**INVISIBLE MULLION DETAIL**

**ACCESSORIES:**

- SILL FLASHING - DEPTH \_\_\_\_\_
- SCREEN \_\_\_\_\_
- FINISH \_\_\_\_\_
- COLOR \_\_\_\_\_
- OTHER \_\_\_\_\_

ITEM NO.	QTY	SIZE	Actual	M.O.	MULLION TYPE	NO. OF SECTIONS	REMARKS
		WIDTH	HEIGHT				

**PROJECT** \_\_\_\_\_ **REPRESENTATIVE** \_\_\_\_\_  
**LOCATION** \_\_\_\_\_ **ILI JOB NO.** \_\_\_\_\_ **REP NO.** \_\_\_\_\_  
**ARCH/ENGR.** \_\_\_\_\_  
**CONTRACTOR** \_\_\_\_\_  
**DATE** \_\_\_\_\_

Industrial Louvers, Inc. Phone: 763-972-2981  
 511 South 7th Street Fax: 763-972-2911  
 Delano, MN 55328  
 CATALOG NO. 614SXP Rev: MAY 2004